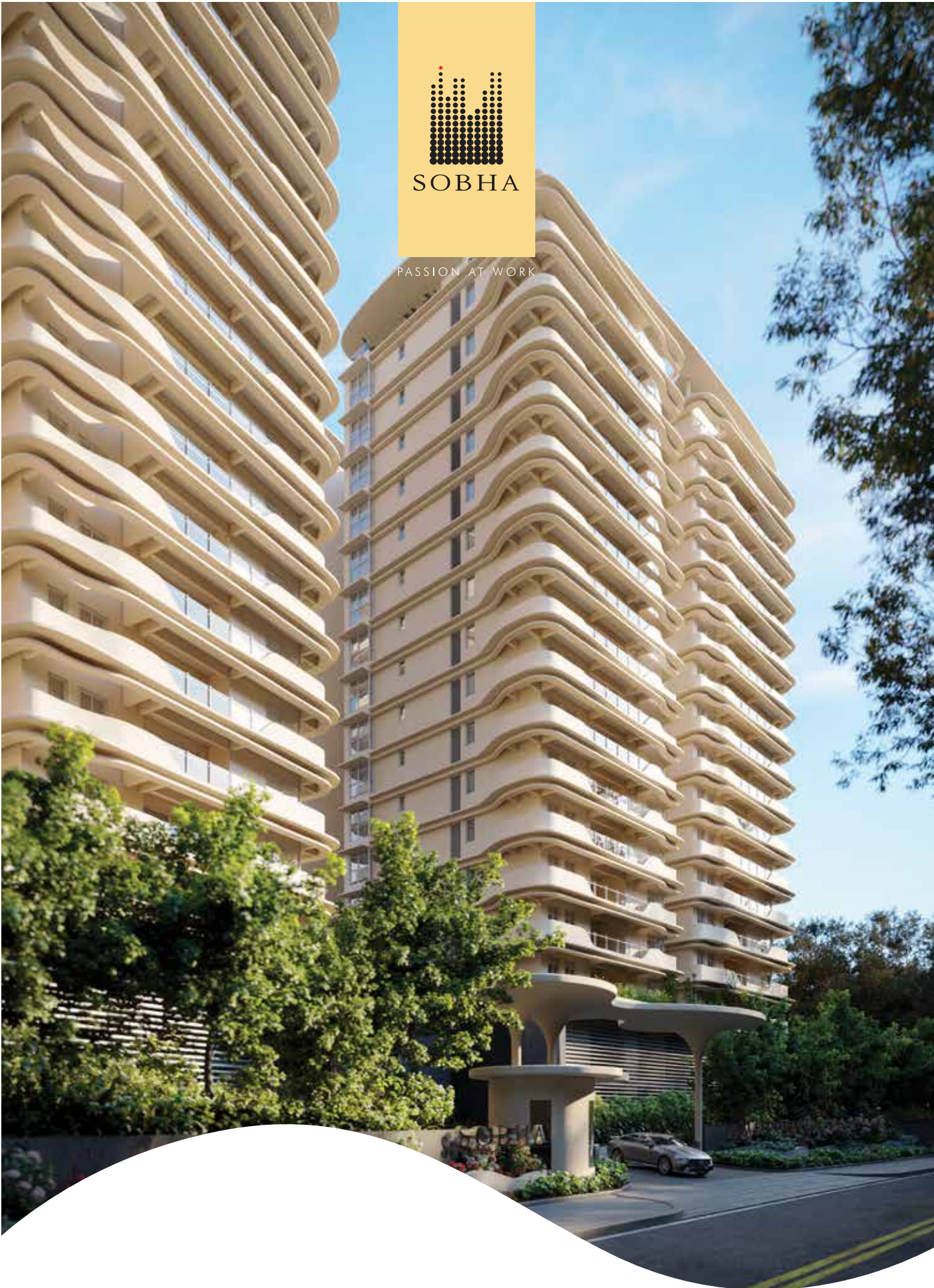




SOBHA

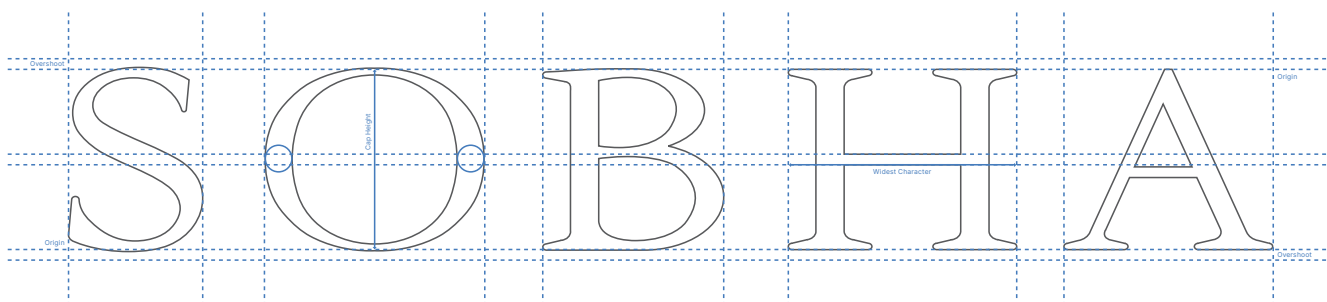
PASSION AT WORK



SOBHA  
**WATERFRONT**  
TRUE-BLUE LUXURY

Passion.  
Inked with Perfection.

19  
95



SOBHA has crafted iconic statements in the residential & commercial spaces by paying minute attention to detail – in systems, processes, and design. With a steadfast approach to deliver impeccable quality, SOBHA performs 1,456 quality checks before handover.

| 27 Years of  
**Passion at Work**

| National Footprint  
**27 Cities in 14 States**

| Strong Workforce  
**10,000+ Employees**

| Residential & Commercial Projects  
**Spread over 120 Million sq. ft.**

# A Portfolio of Excellence.



## Residential

SOBHA believes in setting new benchmarks in quality. From presidential apartments, villas, row houses, and luxury apartments, to plotted developments, every SOBHA product is built to last for generations.

**Delivered over 150 Projects**

spread across 59 million sq. ft.



## Contracting

The contracts business at SOBHA boasts of an expansive portfolio of 332 projects across India, as of 2022. Our turnkey projects include some of the global corporate giants – Taj, ITC, Bosch, Biocon, Timken, and Dell – to name a few.

**Delivered 332 Projects**

spread across 57 million sq. ft.



## Commercial

SOBHA forayed into the commercial space with SOBHA City Mall, in Thrissur. SOBHA's latest venture is 1 SOBHA Mall, an entertainment and shopping centre on St. Marks Road, Bengaluru.

**Delivered 19 Projects**

spread across 4 million sq. ft.

# Pioneering Self-reliance.

SOBHA introduced the concept of backward integration in the real estate industry, bringing the finest together – from precision engineering to innovative design, and from superior concrete products, glazing and metal works to top-notch interiors. This philosophy allows SOBHA to provide unmatched quality to its customers.

## SOBHA's manufacturing verticals



**Concrete Products Division**  
spread across 55,000 sq. ft.



**Interiors Division**  
spread across 3,75,000 sq. ft.



**Glazing & Metal Works Division**  
spread across 1,00,000 sq. ft.



**Precast Facility**  
spread across 73,000 sq. ft.

# SOBHA in Hyderabad, Since 2001.



SOBHA marked its entry in Hyderabad with its contractual project for Infosys. In over two decades, SOBHA has delivered more than 51.5 lakh sq. ft. for Infosys campuses in Gachibowli & Pocharam.

| **INFOSYS Campus - Gachibowli**  
spread across 18.7 lakh sq. ft.

| **INFOSYS Campus - Pocharam**  
spread across 32.8 lakh sq. ft.

# Launching SOBHA's First-ever Residential Project in Hyderabad.

After earning tremendous reputation for its contractual projects for Infosys, SOBHA is now foraying into the residential market in Hyderabad.

As a premium residential micro market with limited inventory, Somajiguda is a sought-after address for the affluent class. The locale, known as a business

centre and a tourist hub, has notable landmarks such as the Raj Bhavan, Hussain Sagar Lake, and Birla Mandir in the vicinity. Somajiguda is also conveniently connected to other prominent areas of Hyderabad such as Banjara Hills, Begumpet, Ameerpet, and IT corridors like Gachibowli and HITEC City.



# Meticulously Designed Master Plan

## Amenities

01. Entry/Exit
02. Waterfall Drive
03. Rooftop Lakeview Deck
04. Patio
05. Corner Park
06. Harbour Plaza
07. 680m Jogging / Cycling Path
08. Cycle Station
09. Pedestrian Entry
10. Splash Pool
11. Galleria Bay
12. Yoga / Meditation Pods
13. Kids' Climbing Wall
14. Outdoor Fitness Corner
15. Multipurpose Sports Court
16. Canyon Cove
17. Seniors' Cabana
18. The Peninsula Club
19. Linear Garden
20. Serenity Podium

### 6-storeyed Peninsula Club

- Ground : Grand Entrance Lobby  
and Multipurpose Hall
- First : Sports Lounge
- Second : Indoor Games  
and Kids' Play Room
- Third : Gym and Yoga / Aerobics
- Fourth : Refuge Area
- Fifth : Badminton Court
- Terrace : Swimming Pool



TAP TO ENLARGE  
THE MASTERPLAN

# A Towering Architectural Feat.



The driveway from the grand entrance flanked by waterfalls gives you a first impression of what is to come. The façade, including the balconies designed in fluid form, renders the project a modern profile.

Right from the Vaastu-compliant entrance, elegance is intrinsic in every aspect of the tower. There is ample space between the towers as there are only four

units per floor. Each tower comes with a grand double-height entrance lobby.

The towers are positioned in a way that most of the homes have a view of the Hussain Sagar Lake. From the Rooftop Lakeview Deck, every resident can enjoy the magnificent views of the lake as well as the Necklace Road.

# Thoughtfully Conceived Amenities.



After a day that saw your productivity soar, you need a refreshing break. Head to The Peninsula Club that offers a plethora of avenues to relax. For the little ones brimming with energy, the Canyon Cove is the place to be. Other amenities include the Harbour Plaza, Rooftop Lakeview Deck and the Galleria Bay.

# Exquisitely Crafted Interiors.



Vaastu-compliant, well-ventilated and with enchanting views – much thought has gone into crafting the spacious interiors of your future home. Now welcome your guests to the living room, and let them enjoy spectacular views of the Hussain Sagar Lake from the expansive balcony. Cast a spell with your culinary wizardry. And when it is time for a good night's sleep, enter the cosy bedroom.