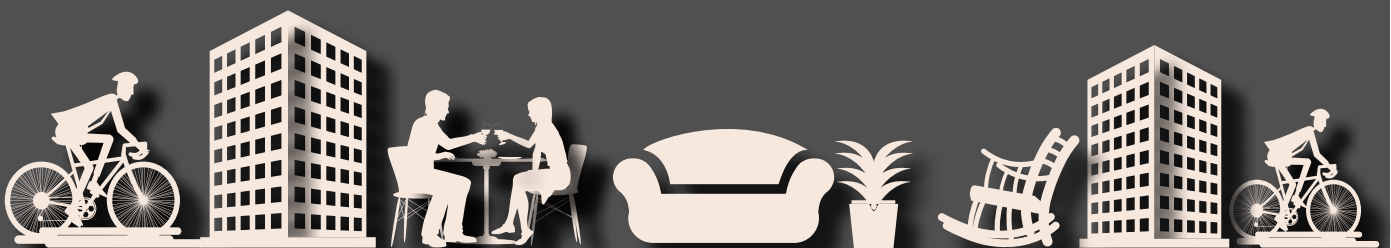


NYATI EVOLVE

2 & 3 RHK PREMIUM HOMES
MAGARPATTA





OPEN THE DOORS TO A NEW LIFESTYLE!

Purposeful recreation is a way of life at Nyati Evolve, and it is not just limited to internal frills and glamour. At the vibrant center of a crème-de-la-crème neighbourhood, Nyati Evolve is set to enjoy the allures of swanky malls, the town's finest restaurants and all the glitter of a modern locale. Closely connected to business and transportation hubs, it is surrounded by the best opportunities. Add to it the well-developed infrastructure of the locale, and you are in for a life full of recreational joys!





COMMON AREAS, AMENITIES & FACILITIES OF NYATI EVOLVE I & II

- » Main entrance gate with security cabin & compound wall
- » Landscaped garden with lawns and flower beds
- » Generator back-up for passenger elevators, pumps, common lights and club house
- » Club house
- » Children's play area with play equipments
- » LED fixtures for common areas
- » Internal tremix concrete driveway with paver blocks
- » STP as per statutory requirements
- » STP recycled water for gardening and flushing
- » Wet garbage disposal through organic waste converter
- » Rain water harvesting
- » Fire fighting system as per statutory requirements
- » Provision of stacked car parking at basement 01 & stilt level
- » Garbage chute as per plan
- » Provision of piped gas network system

SPECIFICATIONS OF NYATI EVOLVE I & II



STRUCTURE, MASONRY WALLS & PLASTER/ PAINTS

- » RCC framed structure
- » External wall with sand faced plaster having textured finish and acrylic paint
- » Internal walls & ceiling - Gypsum finished walls & putty finished ceiling

- » Provision for telephone point in hall & master bedrooms
- » TV point in hall and all bedrooms
- » Split AC electrical points in all bedrooms
- » Electrical points for washing machine, water purifier and fridge
- » Generator back-up for entire flat excluding 15 amp power points



FLOORING & DADO TILES

- » Vitrified tiles for flooring.
Brand – Zealtop/Kajaria/Somany Asian/Nitco
- » Matt finished tiles in common toilets.
Brand - Kajaria/Somany/Nitco/Asian
- » Coloured glazed ceramic tile dado up to 2.1 m.
Brand - Kajaria/Somany/Nitco/Asian



KITCHEN AREA

- » CPVC concealed plumbing lines
- » Granite top kitchen platform with SS sink.
Brand – Nirali/Franky/Futura



TOILETS

- » CPVC concealed plumbing with hot & cold arrangements inside master toilet for wall mixer and wash basin. Brand – Finolex/Ajay FlowGuard/ Prince/Supreme
- » CPVC concealed plumbing inside common/ bedroom toilet for wash basin and with hot & cold arrangements for wall mixer only.
- » Brand – Finolex/Ajay FlowGuard/Prince/ Supreme
- » CP fittings. Brand - Jaguar/Grohe/Isenberg/ Kohler/Shell/American Standard
- » Sanitary wares. Brand – RAK/Hindware/ Jaguar/ Kohler/Grohe/American Standard
- » Solar water heating system inside master bedroom toilet (Time, temperature and quantum of hot water subject to climate conditions)



WINDOWS

- » 3 track UPVC profile sliding windows with mosquito net
- » PVC louvered windows for toilets



PAINTING

- » Internal walls & ceiling - Oil Bound Distemper. Brand - Dulux/ICI/Asian/Berger/Nerolac
- » External walls - Acrylic paint. Brand - Asian/ Dulux/Berger/New world Paints/Jotun/Dr. Fixit
- » Inside toilet & ceiling - Oil paint above tile dado



LIFTS

- » Lifts as per plan. Brand - Kone/Otis/Schindler Johnson



HOME AUTOMATION & SECURITY

- » Lights & fans operated through touch screen panels
- » Main door security having video phone



ELECTRIFICATION & CABLING

- » Concealed copper wiring with modular switches in all flats. Brand for electrical switches - Legrand/ Schneider/Anchor. Brand for electrical wiring – Polycab/Finolex/ R.R.Kabel/Havells

A1 - Ground Floor



A1 - Mezzanine Floor



Nyati Evolve - II (A1) - Proposed 2B + G + Mezzanine + 22 floors, presently sanctioned up to 2B + G + Mezzanine + 16 floors

Nyati Evolve - I (A2) - Proposed and sanctioned up to 2B + G + Mezzanine + 22 floors.

The Furniture layouts displayed in the floor plans are indicative in nature and not included in the actual apartment. The client can consult an interior designer as per his preference to design his own furniture layout.

NOTE: The dimensions of the unit as mentioned are from "bare wall" to "bare wall"



A1 - 1st Floor



A1 - 2nd Floor



Nyati Evolve - II (A1) - Proposed 2B + G + Mezzanine + 22 floors, presently sanctioned up to 2B + G + Mezzanine + 16 floors
The Furniture layouts displayed in the floor plans are indicative in nature and not included in the actual apartment. The client can consult an interior designer as per his preference to design his own furniture layout.

NOTE: The dimensions of the unit as mentioned are from "bare wall" to "bare wall"

A1 -3rd to 16th Floor



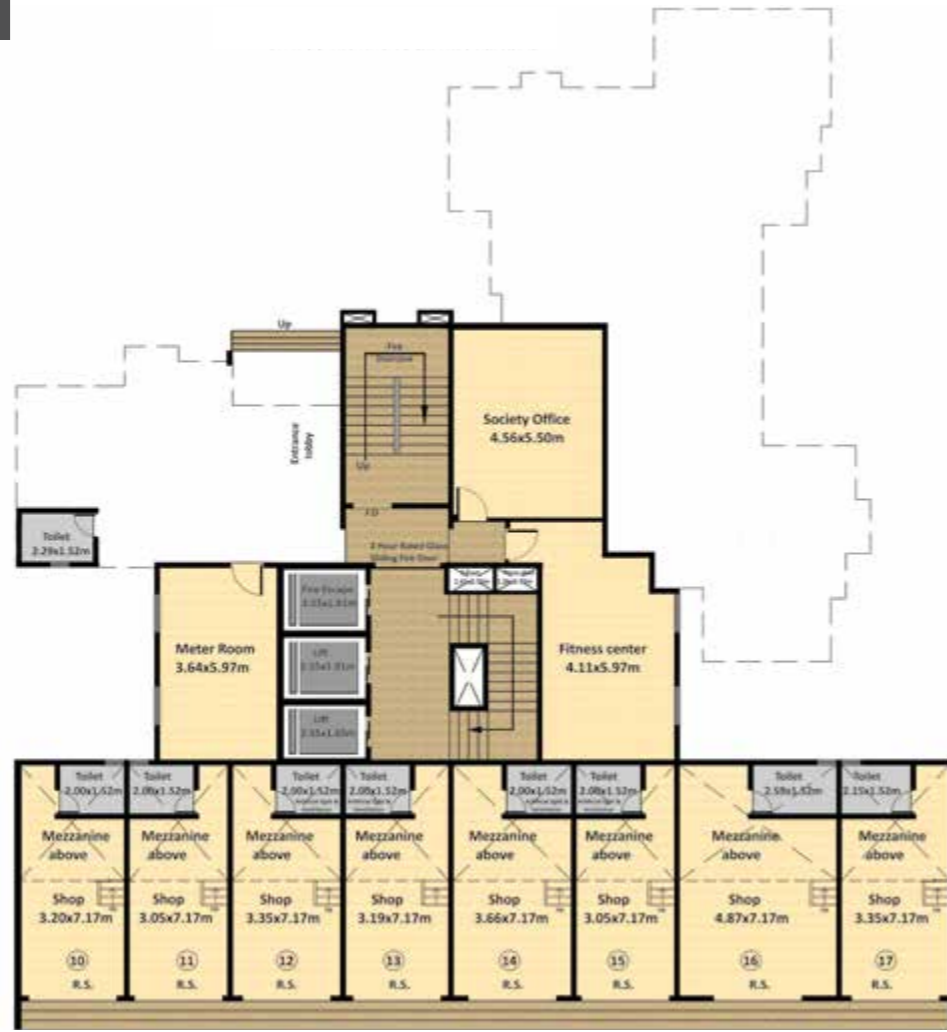
A1 -7th & 12th Floor



Nyati Evolve - II (A1) - Proposed 2B + G + Mezzanine + 22 floors, presently sanctioned up to 2B + G + Mezzanine + 16 floors
The Furniture layouts displayed in the floor plans are indicative in nature and not included in the actual apartment. The client can consult an interior designer as per his preference to design his own furniture layout.

NOTE: The dimensions of the unit as mentioned are from "bare wall" to "bare wall"

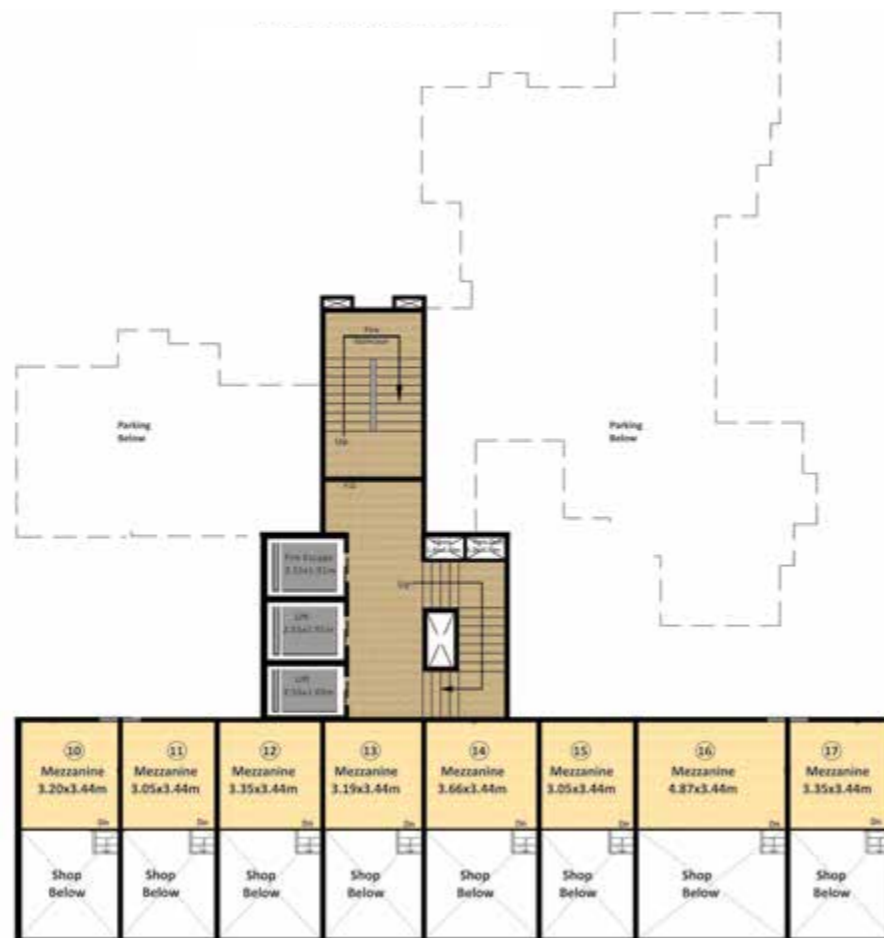
A2 - Ground Floor



A2 - 1st to 6th, 8th to 11th, 13th to 16th, 18th to 21st Floor Plan



A2 - Mezzanine Floor



A2 - 7th, 12th, 17th & 22nd Floor Plan



Disclaimer: The furniture layouts displayed in the floor plans are indicative in nature and not included in the actual apartment. The client can consult an interior designer as per his preference to design his own furniture layout. Note: The dimensions of the unit as mentioned are from "bare wall" to "bare wall".

Disclaimer: The furniture layouts displayed in the floor plans are indicative in nature and not included in the actual apartment. The client can consult an interior designer as per his preference to design his own furniture layout. Note: The dimensions of the unit as mentioned are from "bare wall" to "bare wall".