



CHERISH YOUR
HOME FOREVER.



WHERE LIFE LOOKS A LOT BRIGHT.

Anyone who wants a home is looking for a place that cuts down travel, enhances lifestyle experiences, and keeps us at easy distances from every aspect essential to complete and live the everyday life. You will find all of those at Hallmark Vesta. Because this one's strategically located in Pati, a region located off Kollur close to Outer Ring Road connecting industrial sector Patancheru and IT corridor in Financial District.



NEIGHBOURHOOD FOR EVERYONE'S GOOD.



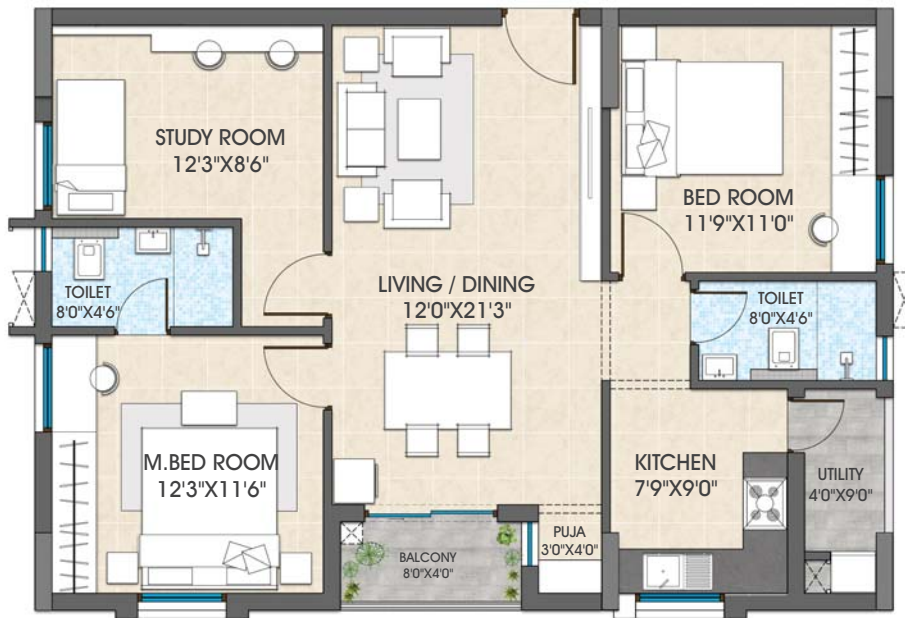
Designed with an eye for contemporary architecture and keeping in mind how the future is likely to evolve, the architects who have masterminded the design of Hallmark Vesta have put thought and mind to ensure that you are besotted by it no end.

LEGEND

- | | |
|-------------------------|---------------------|
| 01 Entrance | 11 Play Court |
| 02 Ramp | 12 OAT |
| 03 Plaza | 13 Seating Court |
| 04 Party Lawn | 14 Yoga Court |
| 05 Periphery Plantation | 15 Outdoor Gym |
| 06 Entrance Court | 16 Herbal Garden |
| 07 Deck | 17 Jogging Track |
| 08 Elder Court | 18 Fruiting Avenue |
| 09 Flower Court | 19 Flowering Avenue |
| 10 Skating Rink | |

North Facing 2 BHK | 1306 Sft

Flat No# 03, 04, 05, 06, 07, 08, 09, 10, 11, 12.



NOT TO SCALE

Disclaimer: Tolerance of + / - 2% is possible in the unit areas on account of design and constructions variances.

North Facing 2 BHK | 1295 Sft

Flat No# 13

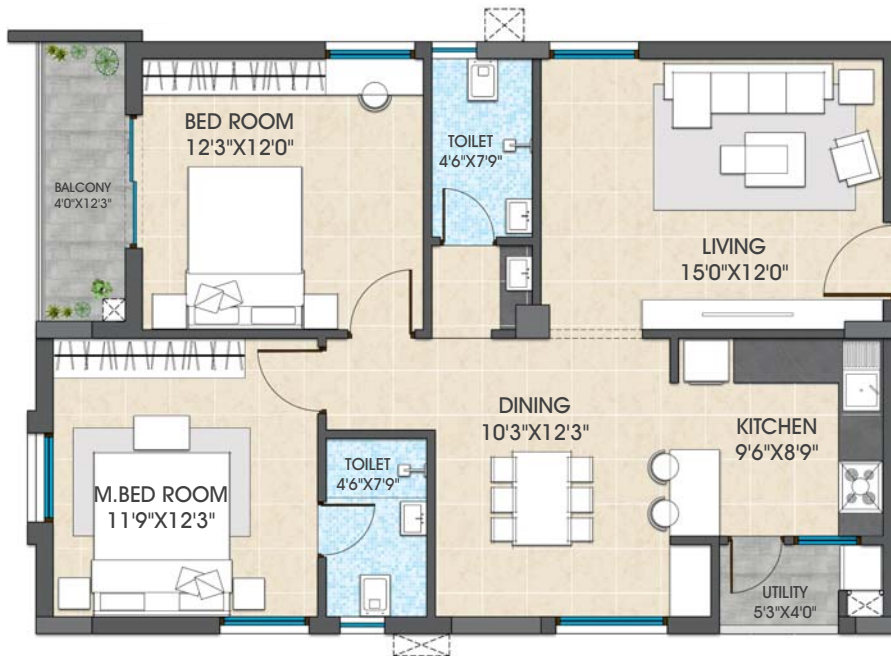


Disclaimer: Tolerance of + / - 2% is possible in the unit areas on account of design and constructions variances.

NOT TO SCALE

East Facing 2 BHK | 1266 Sft

Flat No# 02, 14, 17, 18, 26, 30, 34.

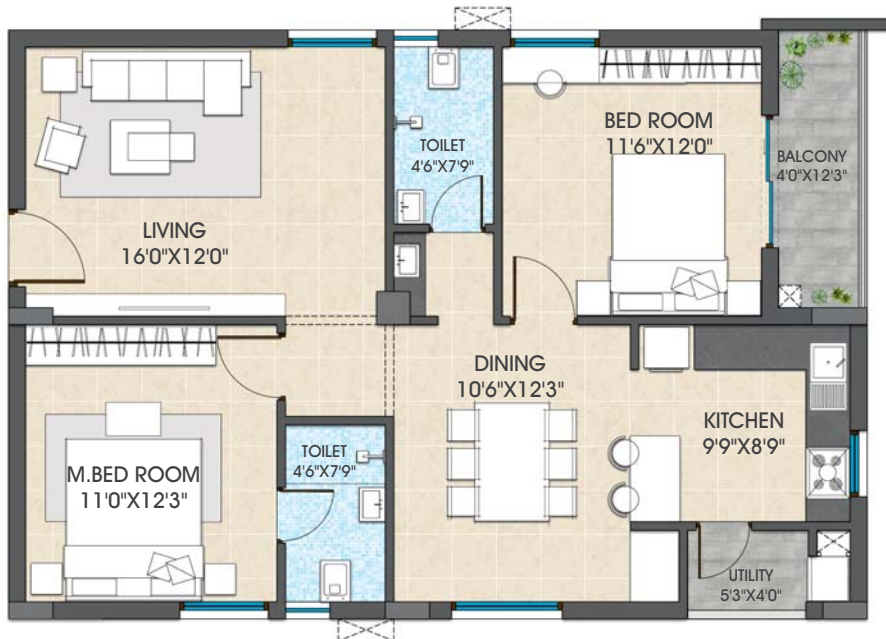


Disclaimer: Tolerance of + / - 2% is possible in the unit areas on account of design and constructions variances.

NOT TO SCALE

West Facing 2 BHK | 1266 Sft

Flat No# 21, 22, 25, 29, 33, 37.

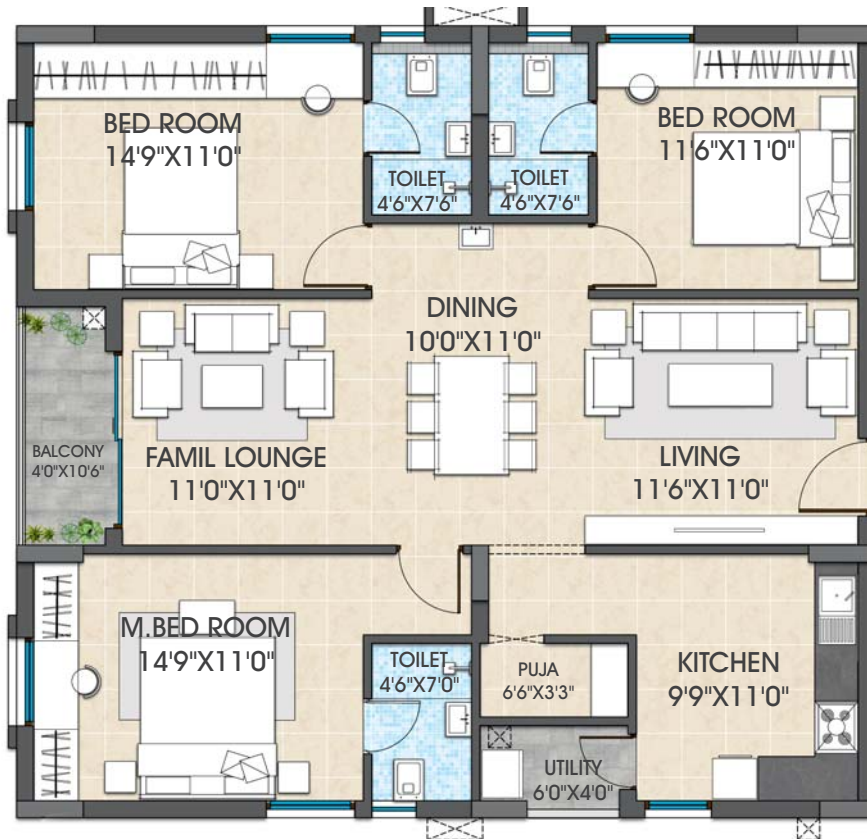


Disclaimer: Tolerance of + / - 2% is possible in the unit areas on account of design and constructions variances.

NOT TO SCALE

East Facing 3 BHK | 1706 Sft

Flat No# 15, 16, 19.



Disclaimer: Tolerance of + / - 2% is possible in the unit areas on account of design and constructions variances.

NOT TO SCALE

West Facing 3 BHK | 1706 Sft

Flat No# 28, 32, 36.

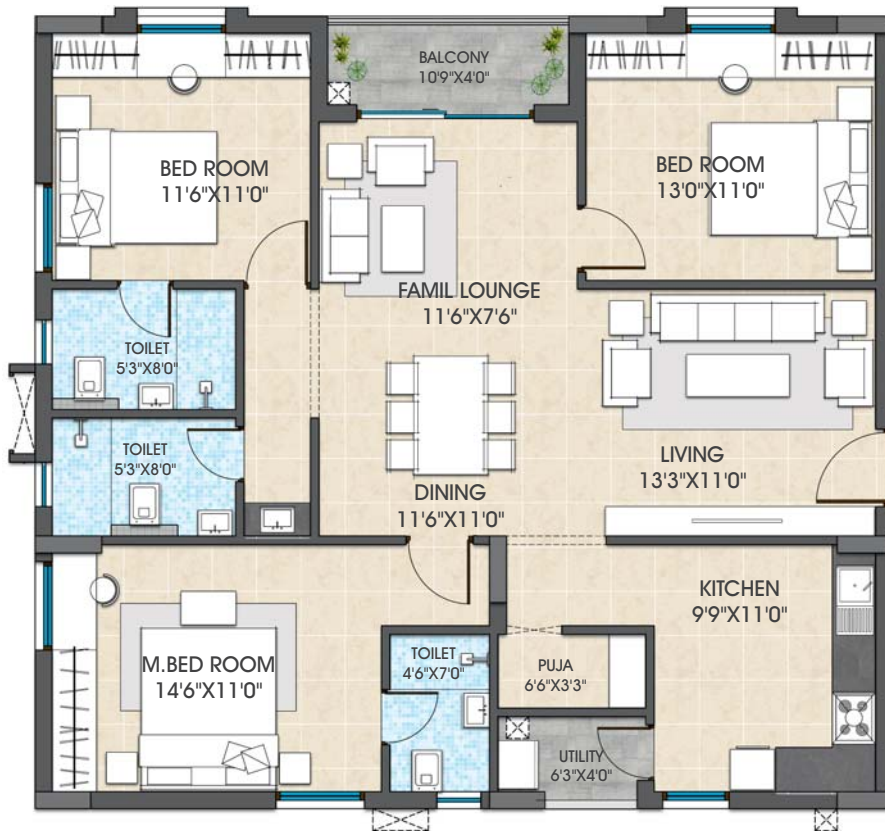


Disclaimer: Tolerance of + / - 2% is possible in the unit areas on account of design and constructions variances.

NOT TO SCALE

East Facing 3 BHK | 1706 Sft

Flat No# 01, 27, 31, 35.

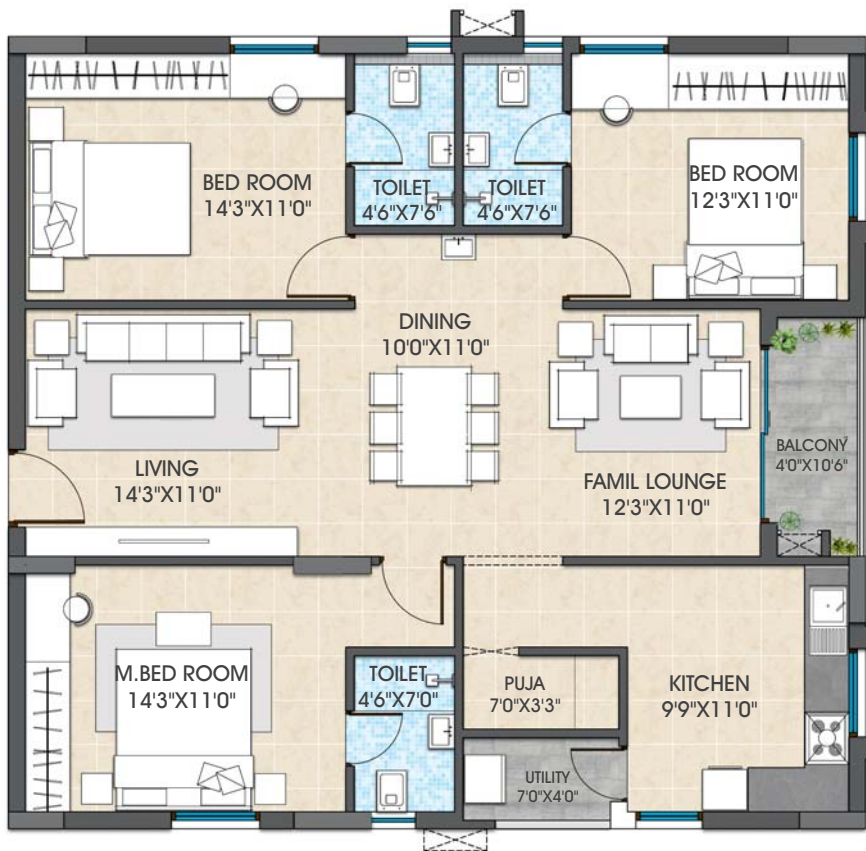


Disclaimer: Tolerance of + / - 2% is possible in the unit areas on account of design and constructions variances.

NOT TO SCALE

West Facing 3 BHK | 1706 Sft

Flat No# 20, 23, 24.



NOT TO SCALE

Disclaimer: Tolerance of + / - 2% is possible in the unit areas on account of design and constructions variances.

TAKE SHELTER UNDER NATURE'S COOL.

Hallmark Vesta will be the place for every seed to grow into a tree - whether it is your happiness or your young ones. We have made a purposeful selection of trees that will survive time and tides of weather, so you can enjoy their company.



RECREATION MADE TO BE REAL.

Hallmark Vesta Clubhouse isn't a place where lifestyle amenities have been planned to just exist or add to mere features, especially when you talk about it with your extended family and friends. But a residence that has features which you can make the most of, and enhance your health, well-being and times you want to refresh or relax. Take to a splash in the swimming pool or look within and realize a lot about life at the meditation zone.



SPECIFICATIONS

We've ensured that every square-foot of your home at Hallmark Vesta should be nothing less than "wow".
Says everything about our focus on quality?

STRUCTURE

R.C.C. framed structure to withstand wind and seismic loads

SUPER STRUCTURE

8" thick Red Brick Blocks for external walls

4" thick Red Brick Blocks for internal walls

INTERNAL: Plastering in CM for walls

EXTERNAL: Plastering in CM for external walls

DOORS AND WINDOWS

MAIN DOOR: Engineered wood frame and designer shutter with reputed hardware fittings with both sides PU polish finishing

INTERNAL DOORS: Engineered wood frame and designer shutter with reputed hardware fittings.

FRENCH DOORS: UPVC door frames with float glass with provision for mosquito mesh

WINDOWS: UPVC windows with provision for mosquito mesh (provision of track for mosquito mesh will be as per window type and feasibility. Mosquito mesh and installation for windows and French doors shall be at extra cost)

BATHROOMS

- Wall-mounted EWC in all bathrooms
- Wash basins in dining/balcony area, master and children's toilets
- Single lever diverter with shower of reputed make
- All C.P. and sanitary fittings of reputed make
- Provision for geysers and exhaust fans in all bathrooms

FLOORING

BEDROOMS, LIVING, DRAWING,
DINING & KITCHEN:

Vitrified tiles of reputed make

BALCONIES: Vitrified tiles of reputed make with matt finish

BATHROOMS: Acid-resistant, anti-skid vitrified / ceramic tiles of reputed make

CORRIDORS: Vitrified tiles of reputed make

STAIRCASE: Granite/Tandoor Stone

UTILITIES: Ceramic tiles of reputed make

PAINTING

INTERNAL: Smooth putty finish with 2 coats of premium acrylic emulsion paint of reputed make over a coat of primer

EXTERNAL: Textured/smooth finish and two coats of exterior emulsion paint of reputed make

KITCHEN

- Granite platform with stainless steel sink, CP fittings with 2.0" height ceramic tile dado over granite countertop
- Provision for fixing water purifier, exhaust fan and chimney
- Provision for washing machine in the utility area

ELECTRICAL

- Power outlets for geysers and exhaust fans in all bathrooms
- Power plug for cooking range, chimney, refrigerator, micro wave ovens, mixer / grinders in kitchen
- Distribution boards and MCBs of premium make
- Modular Electrical Switches of premium make
- Power outlets for air-conditioners in all bedrooms

TELECOM / CABLE TV / INTERNET

- Telephone provision in MBR and drawing area
- Provision for internet connection in each flat
- Provision for cable connection in master bedroom, children's bedroom and living room

LIFTS

6-passenger automated lift of reputed make, entrance with front granite/tile cladding

POWER BACK-UP

Power back-up for fans and lights

WTP & STP

Domestic water made available through an exclusive water-softening plant

A sewage treatment plant of adequate capacity as per norms will be provided inside the project, treated sewage water will be used for the landscaping and flushing purpose