

Homes inspired by the Five Elements



Premium 2 & 3 BHK

Floor Plan Booklet



k kaleido

Own your slice of the Urban Forest

Kohinoor Kaleido enriches your life with an Urban Forest that brings the five elements together. It's a novel concept encompassing the best of modern-day lifestyle features infused in nature's wonders. It would be no exaggeration to say that it's a leaf out of a fairytale. So, go ahead and own a slice of the Urban Forest. Befriend the elements for life.



Water

Bio Pond
Water Management
Swimming Pool



Fire

Sunlit Homes
Solar Water Heating
Bonfire



Wind

Cross Ventilation
Wide Open Spaces
Unadulterated Air



Earth

Planting
Bamboo Grove
Orchards



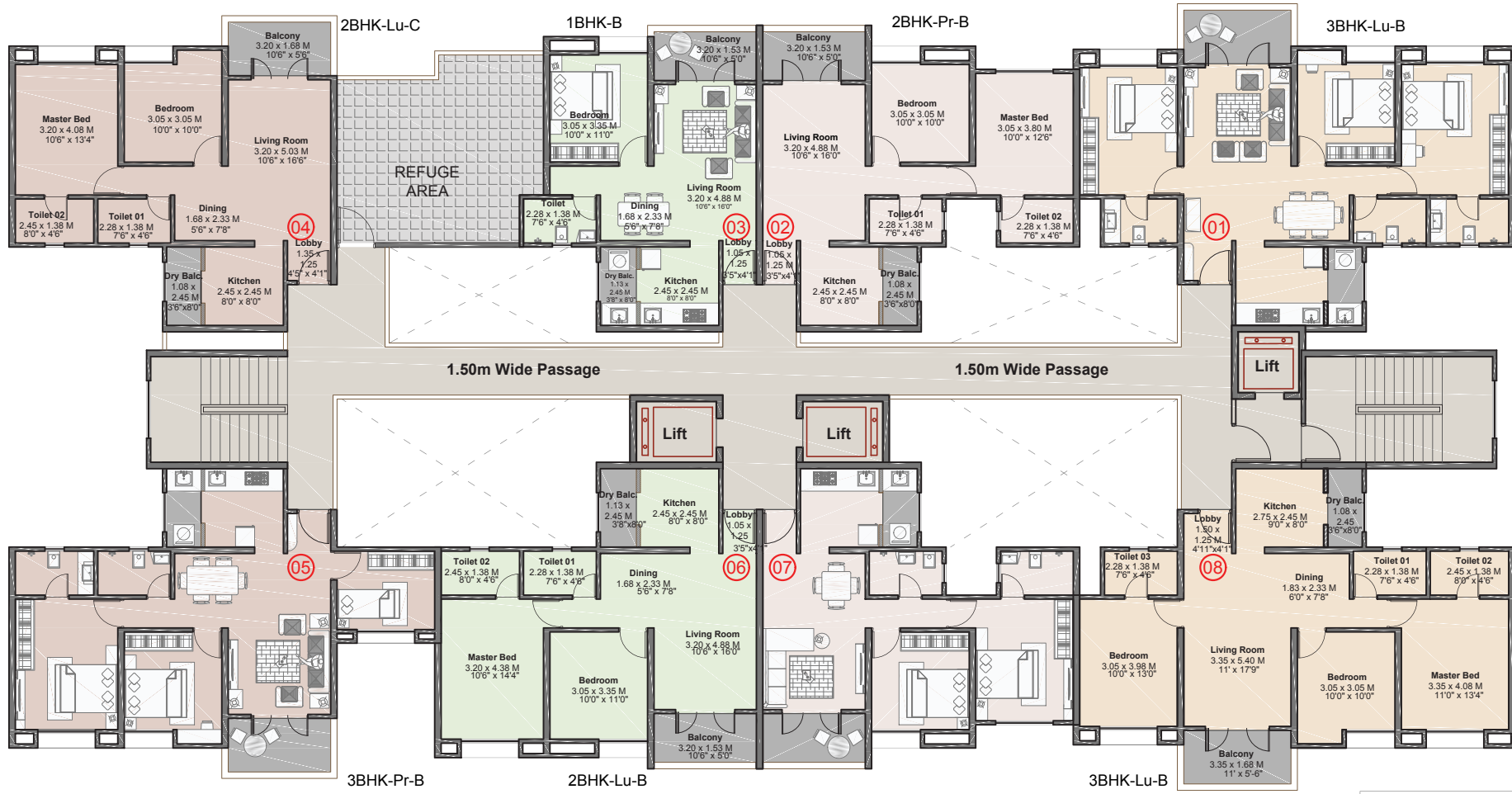
Space

Clubhouse & Party Lawn
Sports Amenities
Pets' Park

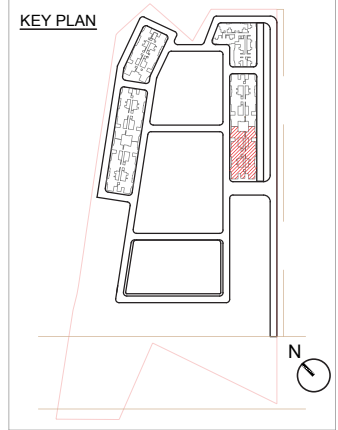
Master Plan



Floor Plans



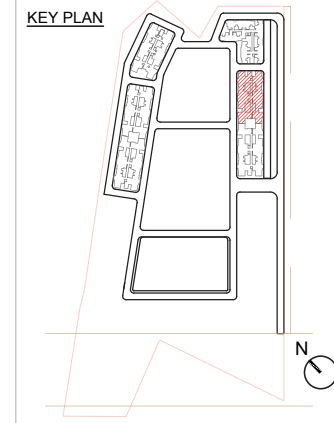
TOWER - A1
REFUGE FLOOR PLAN



NO.	FLAT NO.	TYPE	CARPET AREA		BALCONY (EXCLUSIVE)		BALCONY DRY (EXCLUSIVE)		TOTAL AREA	
			Sqmt.	Sqft.	Sqmt.	Sqft.	Sqmt.	Sqft.	Sqmt.	Sqft.
01	801,1301,1801	3BHK-Lu-B	83.60	899.87	5.61	60.39	2.63	28.31	64.63	696
08	808,1308,1808									
02	802,1302,1802	2BHK-Pr-B	57.12	614.84	4.88	52.53	2.76	29.71	52.39	564
07	807,1307,1807									
03	803,1303,1803	1BHK-B	44.75	481.69	4.88	52.53	2.76	29.71	52.39	564
04	804,1304,1804	2BHK-Lu-C	63.14	679.64	5.36	57.70	2.63	28.31	71.13	766
05	805,1305,1805	3BHK-Pr-B	71.10	765.32	5.36	57.70	2.63	28.31	79.09	851
06	806,1306,1806	2BHK-Lu-B	63.59	684.48	4.88	52.53	2.76	29.71	71.23	767



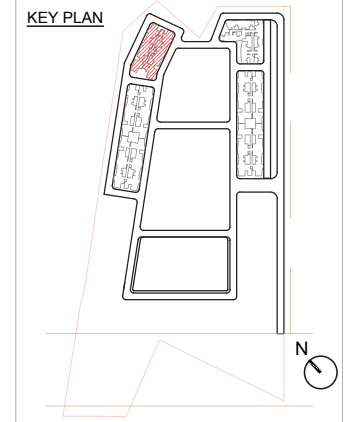
TOWER - A2
REFUGE FLOOR PLAN



NO.	FLAT NO.	TYPE	CARPET AREA		BALCONY (EXCLUSIVE)		BALCONY DRY (EXCLUSIVE)		TOTAL AREA	
			Sqmt.	Sqft.	Sqmt.	Sqft.	Sqmt.	Sqft.	Sqmt.	Sqft.
01	801,1301,1801	3BHK-Lu-B	83.60	899.87	5.61	60.39	2.63	28.31	91.84	989
08	808,1308,1808									
02	802,1302,1802	2BHK-Pr-B	57.12	614.84	4.88	52.53	2.63	28.31	64.63	696
07	807,1307,1807									
03	803,1303,1803	1BHK-B	44.75	481.69	4.88	52.53	2.76	29.71	52.39	564
04	804,1304,1804	2BHK-Lu-C	63.14	679.64	5.36	57.70	2.63	28.31	71.13	766
05	805,1305,1805	3BHK-Pr-B	71.10	765.32	5.36	57.70	2.63	28.31	79.09	851
06	806,1306,1806		2BHK-Lu-B	63.59	684.48	4.88	52.53	2.76	29.71	71.23



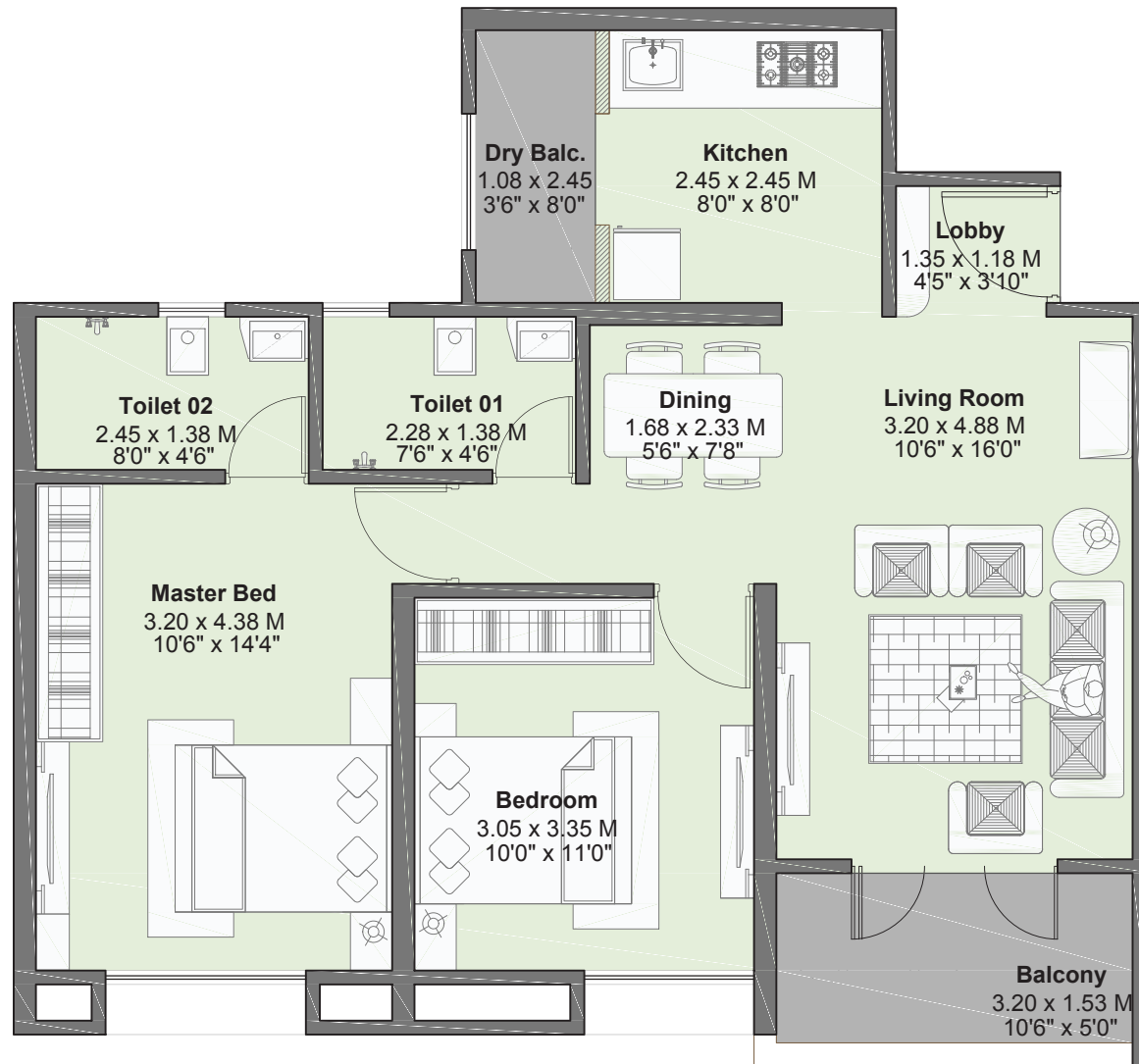
TOWER - A4
REFUGE FLOOR PLAN



NO.	FLAT NO.	TYPE	CARPET AREA		BALCONY (EXCLUSIVE)		BALCONY DRY (EXCLUSIVE)		TOTAL AREA	
			Sqmt.	Sqft.	Sqmt.	Sqft.	Sqmt.	Sqft.	Sqmt.	Sqft.
01	801,1301,1801	3BHK-Lu-A	83.68	900.73	5.61	60.39	2.63	28.31	91.92	989
02	808,1308,1808									
03	802,1302,1802	2BHK-Pr-A	57.25	616.24	4.88	52.53	2.63	28.31	64.76	697
04	807,1307,1807									
05	803,1303,1803	2BHK-Lu-A	63.70	685.67	4.88	52.53	2.63	28.31	71.21	767
06	804,1304,1804	3BHK-Pr-A	71.18	766.18	5.36	57.70	2.63	28.31	79.17	852
07	805,1305,1805	2BHK-Lu-D	63.22	680.50	5.36	57.70	2.63	28.31	71.21	767
08	806,1306,1806	1BHK-C	44.86	482.87	4.88	52.53	2.63	28.31	52.37	564

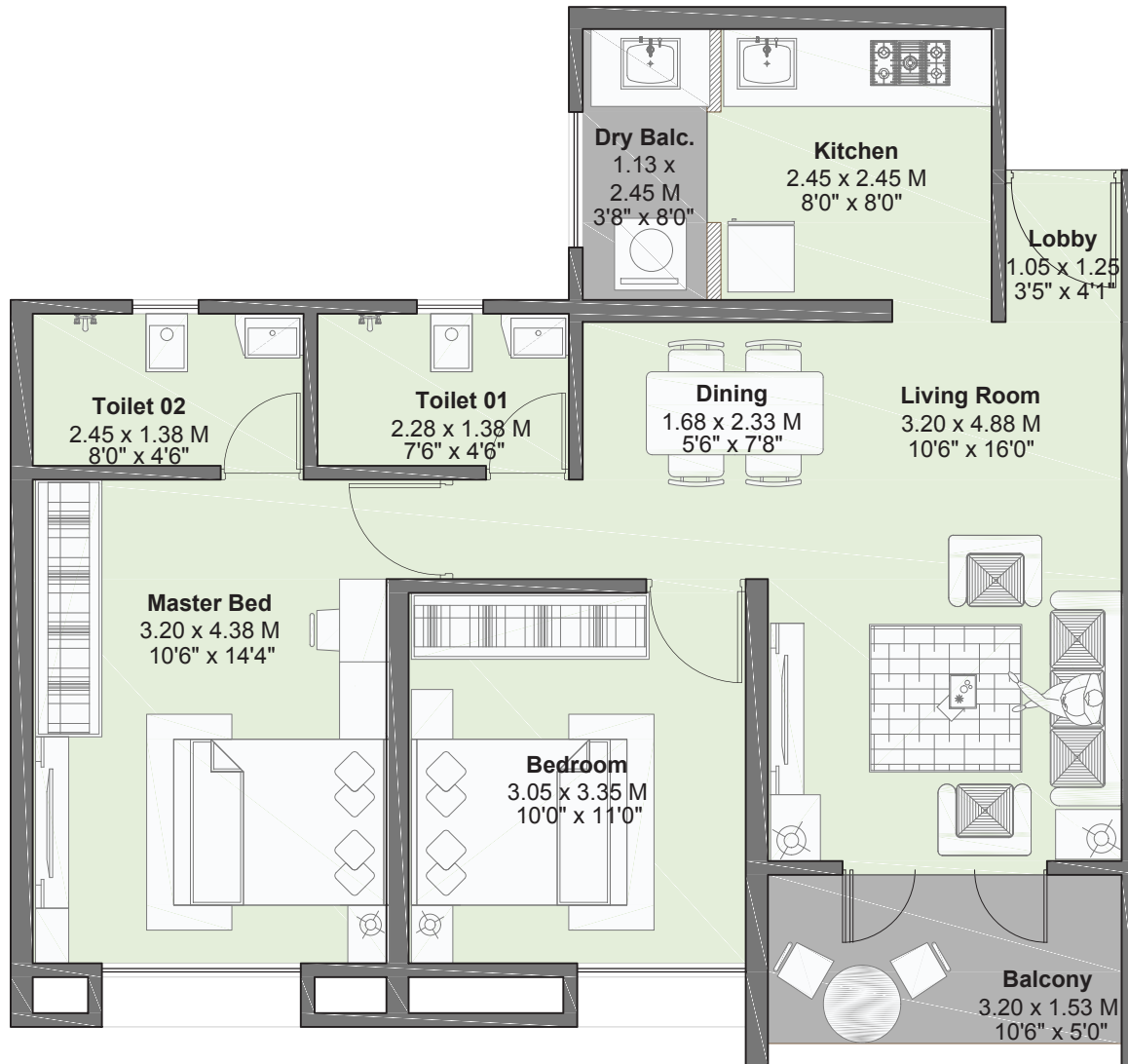
Unit Plans

2 BHK - LUXURY A



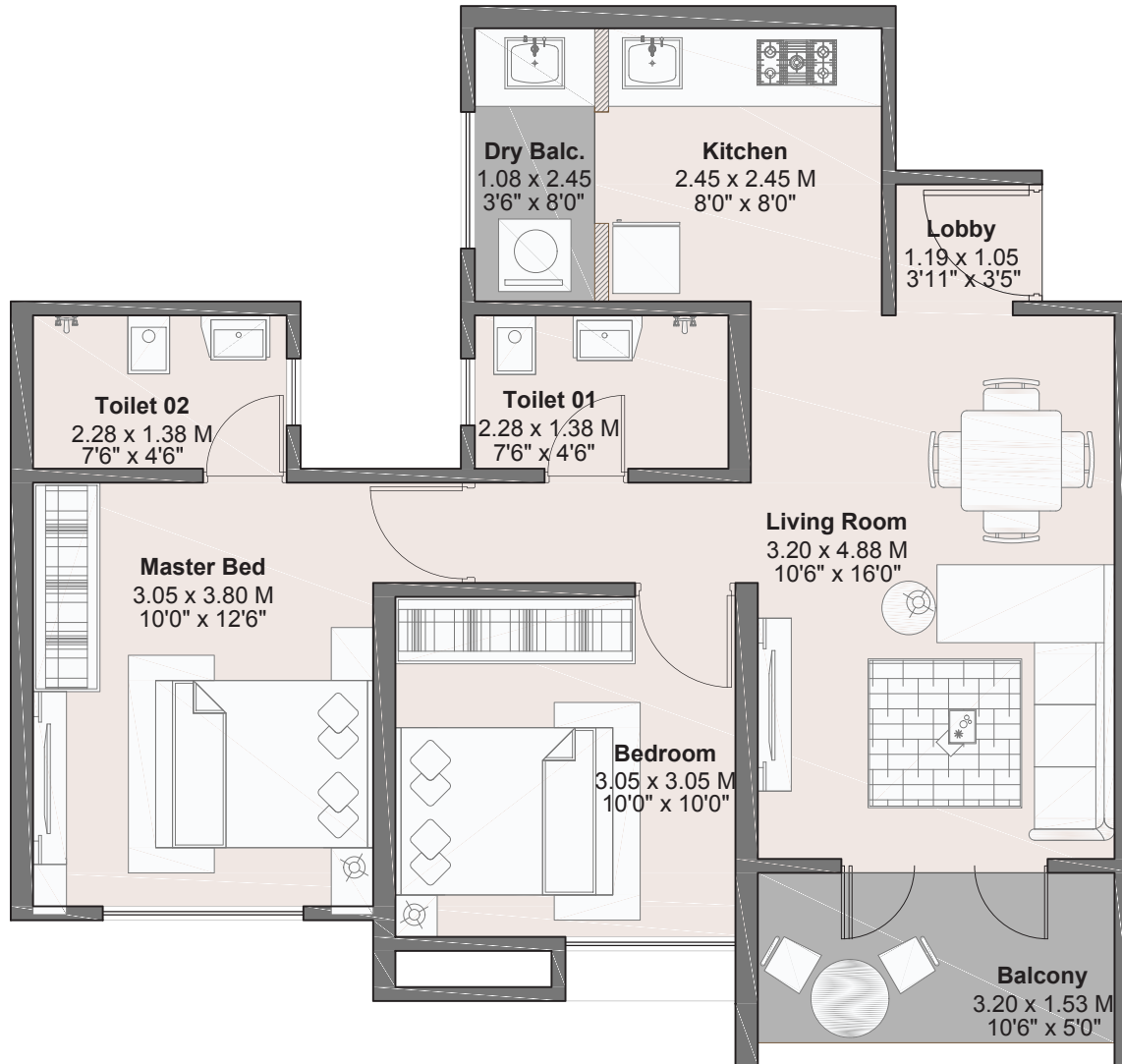
Type	Carpet Area		Balcony Area		Dry Balcony Area		Total Carpet Area	
	Sqm	Sqft	Sqm	Sqft	Sqm	Sqft	Sqm	Sqft
2 BHK-LUXURY A	63.70	685.67	4.88	52.53	2.63	28.31	71.21	767

2 BHK - LUXURY B



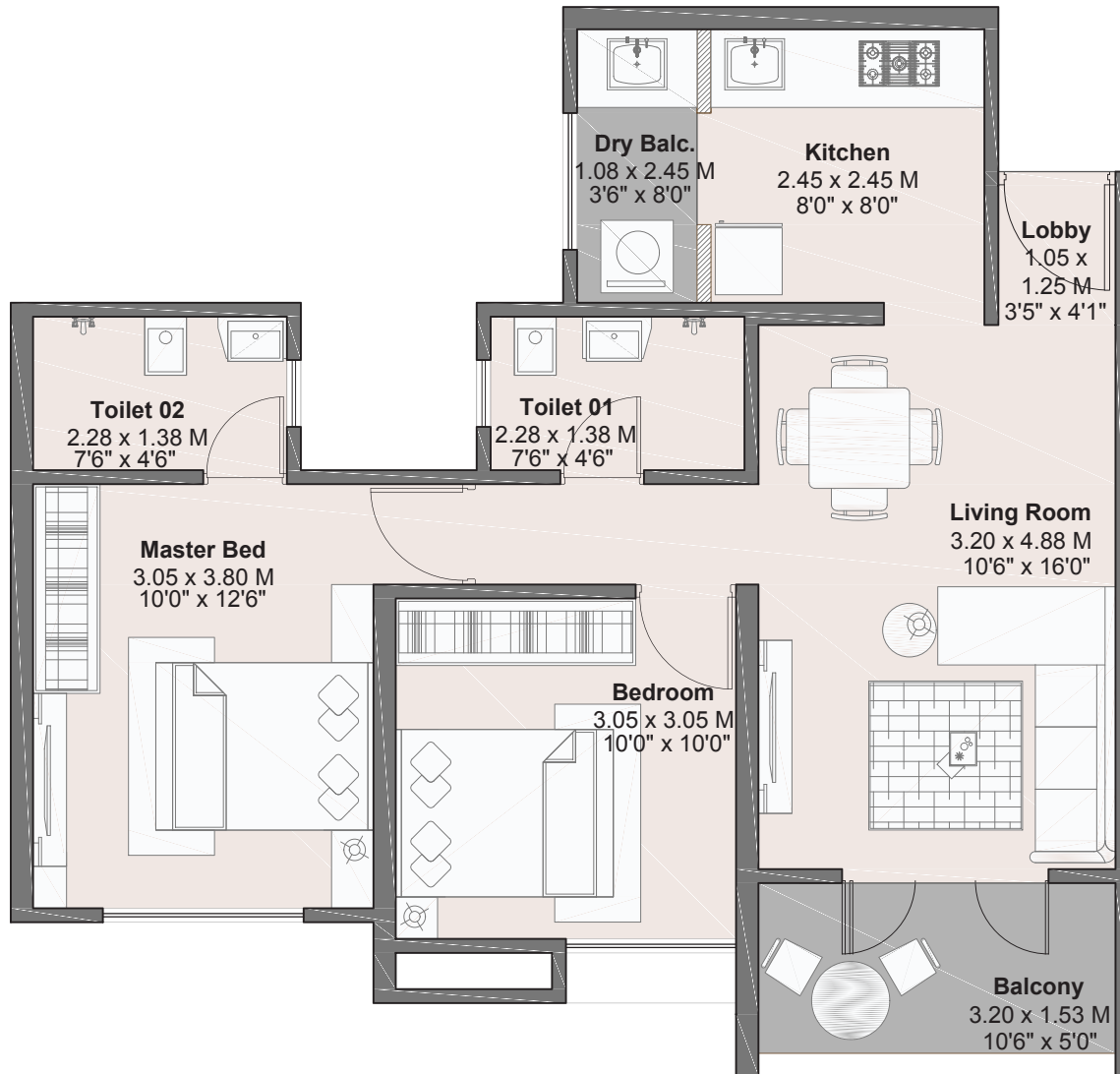
Type	Carpet Area		Balcony Area		Dry Balcony Area		Total Carpet Area	
	Sqm	Sqft	Sqm	Sqft	Sqm	Sqft	Sqm	Sqft
2 BHK-LUXURY B	63.59	684.48	4.88	52.53	2.76	29.71	71.23	767

2 BHK - PREMIUM A



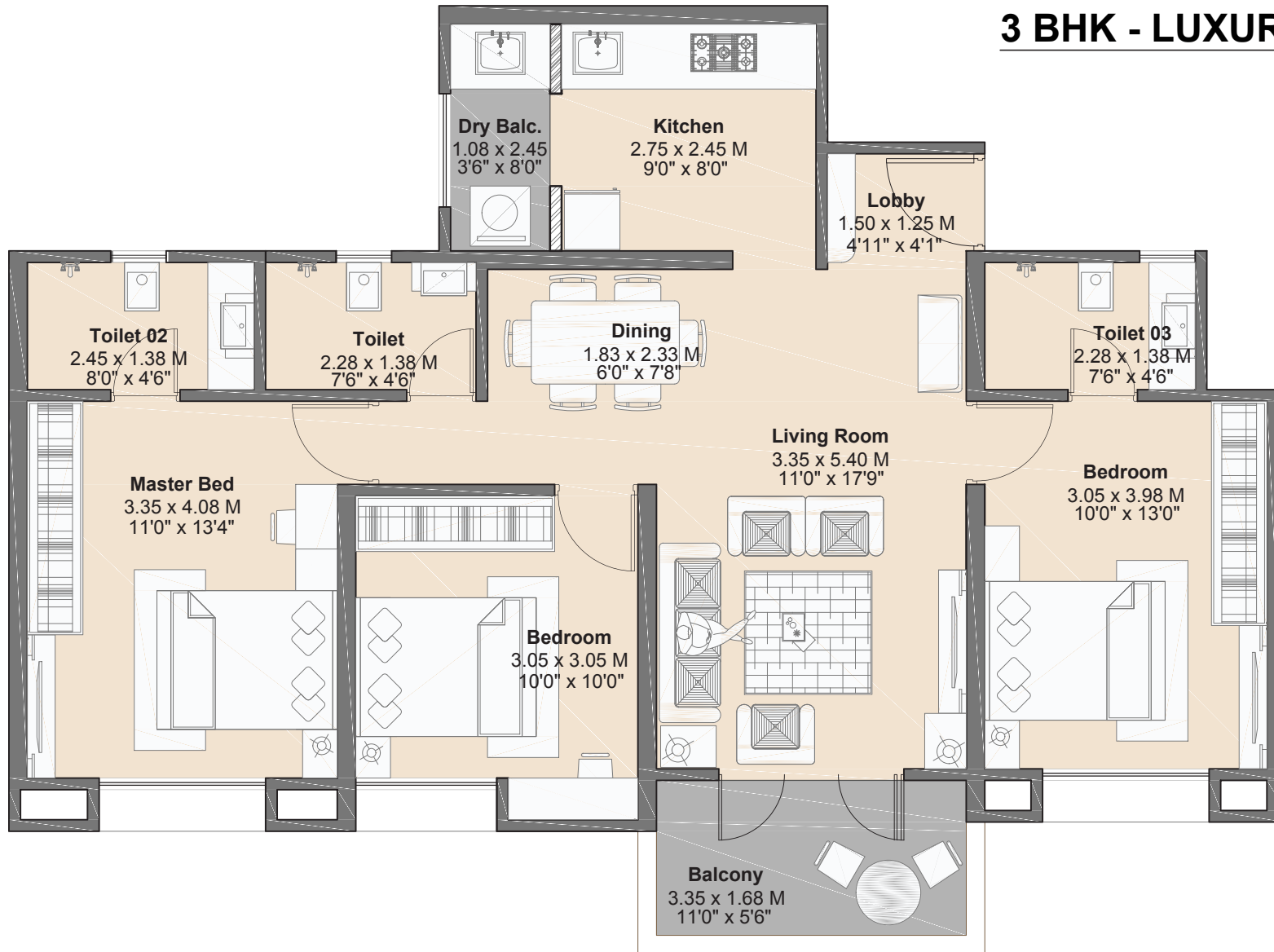
Type	Carpet Area		Balcony Area		Dry Balcony Area		Total Carpet Area	
	Sqm	Sqft	Sqm	Sqft	Sqm	Sqft	Sqm	Sqft
2 BHK- PREMIUM A	57.25	616.24	4.88	52.53	2.63	28.31	64.76	697

2 BHK - PREMIUM B



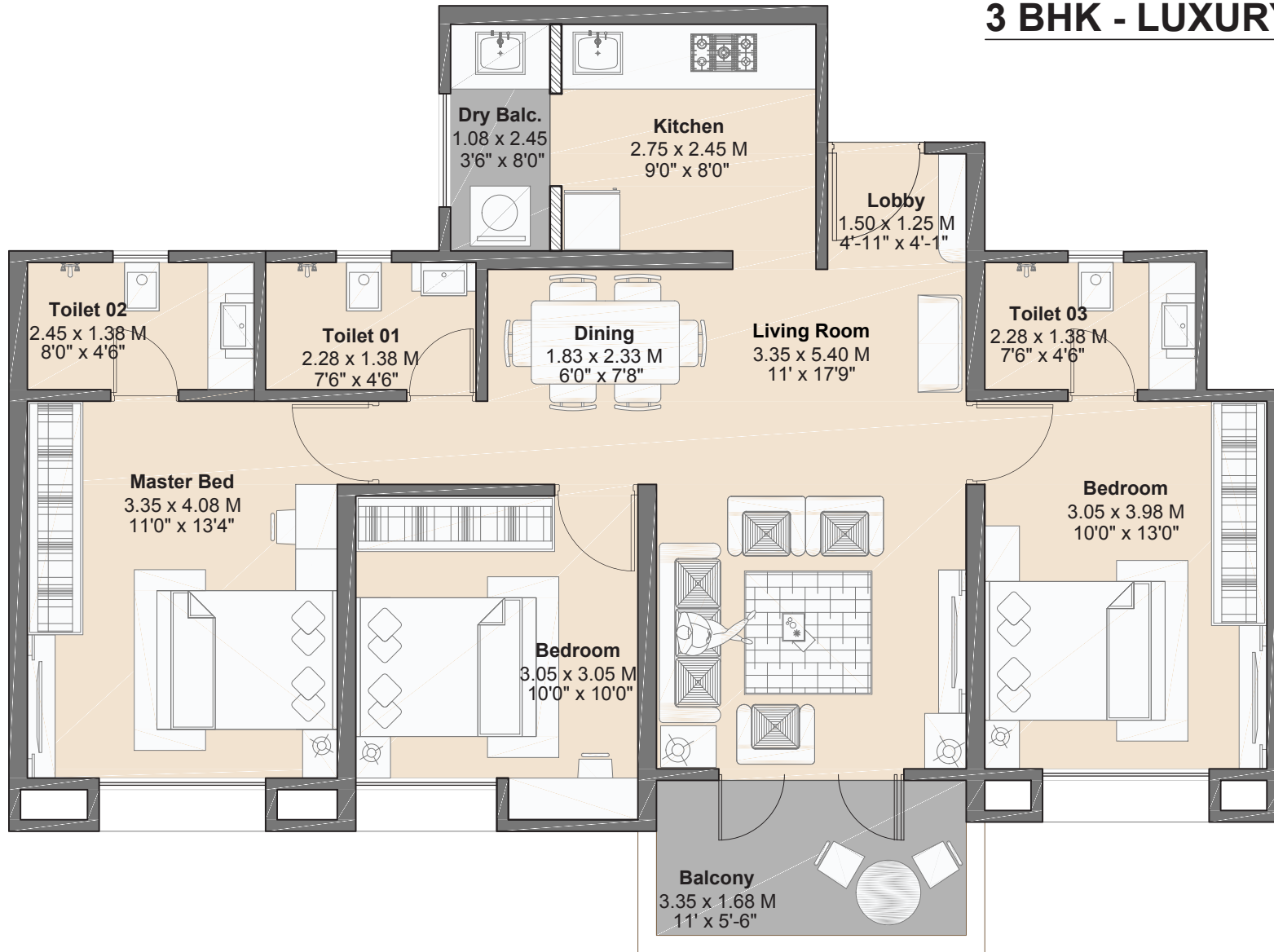
Type	Carpet Area		Balcony Area		Dry Balcony Area		Total Carpet Area	
	Sqm	Sqft	Sqm	Sqft	Sqm	Sqft	Sqm	Sqft
2 BHK- PREMIUM B	57.12	614.84	4.88	52.53	2.63	28.31	64.63	696

3 BHK - LUXURY A



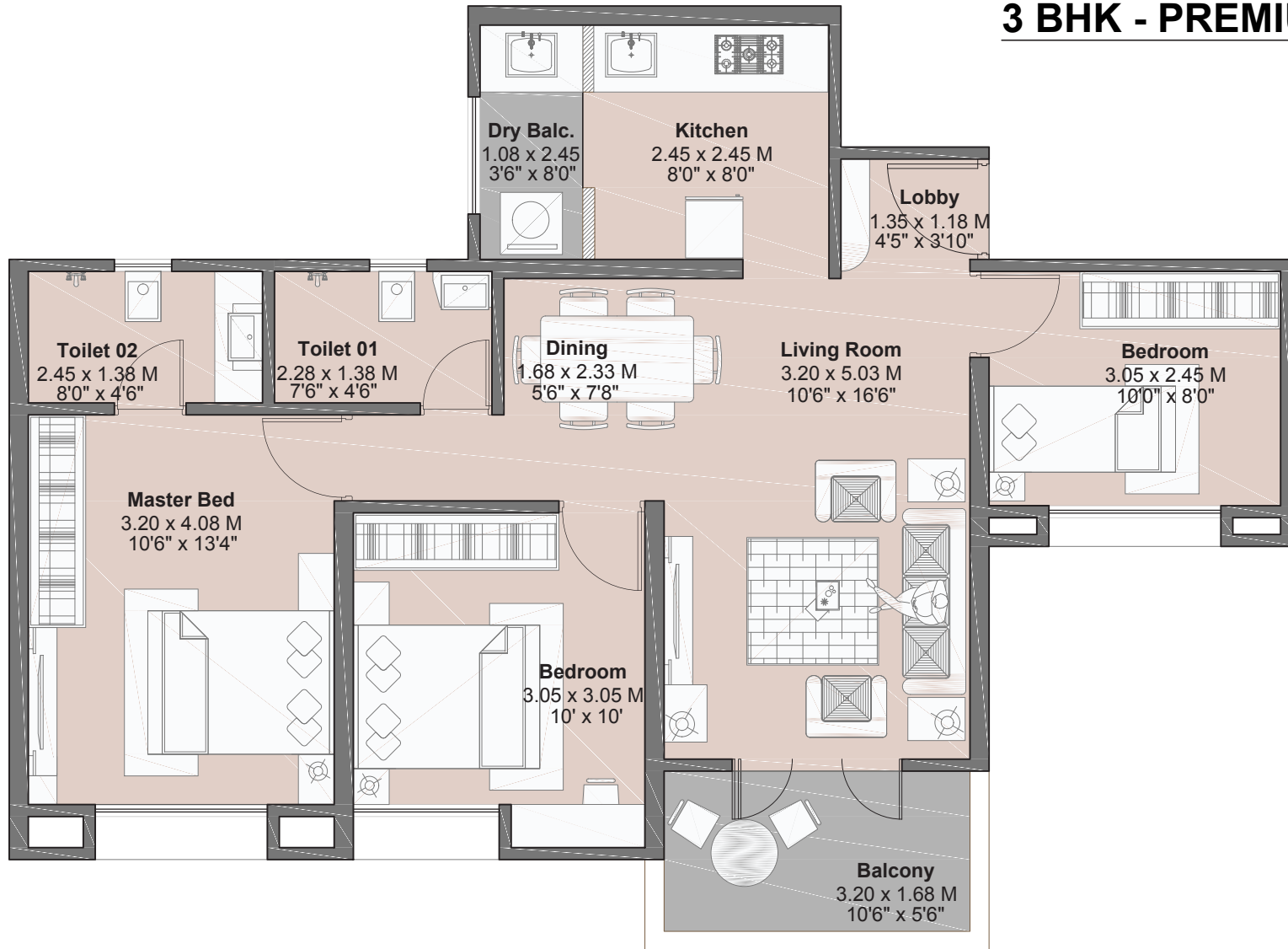
Type	Carpet Area		Balcony Area		Dry Balcony Area		Total Carpet Area	
	Sqm	Sqft	Sqm	Sqft	Sqm	Sqft	Sqm	Sqft
3 BHK-LUXURY A	83.68	900.73	5.61	60.39	2.63	28.31	91.92	989

3 BHK - LUXURY B



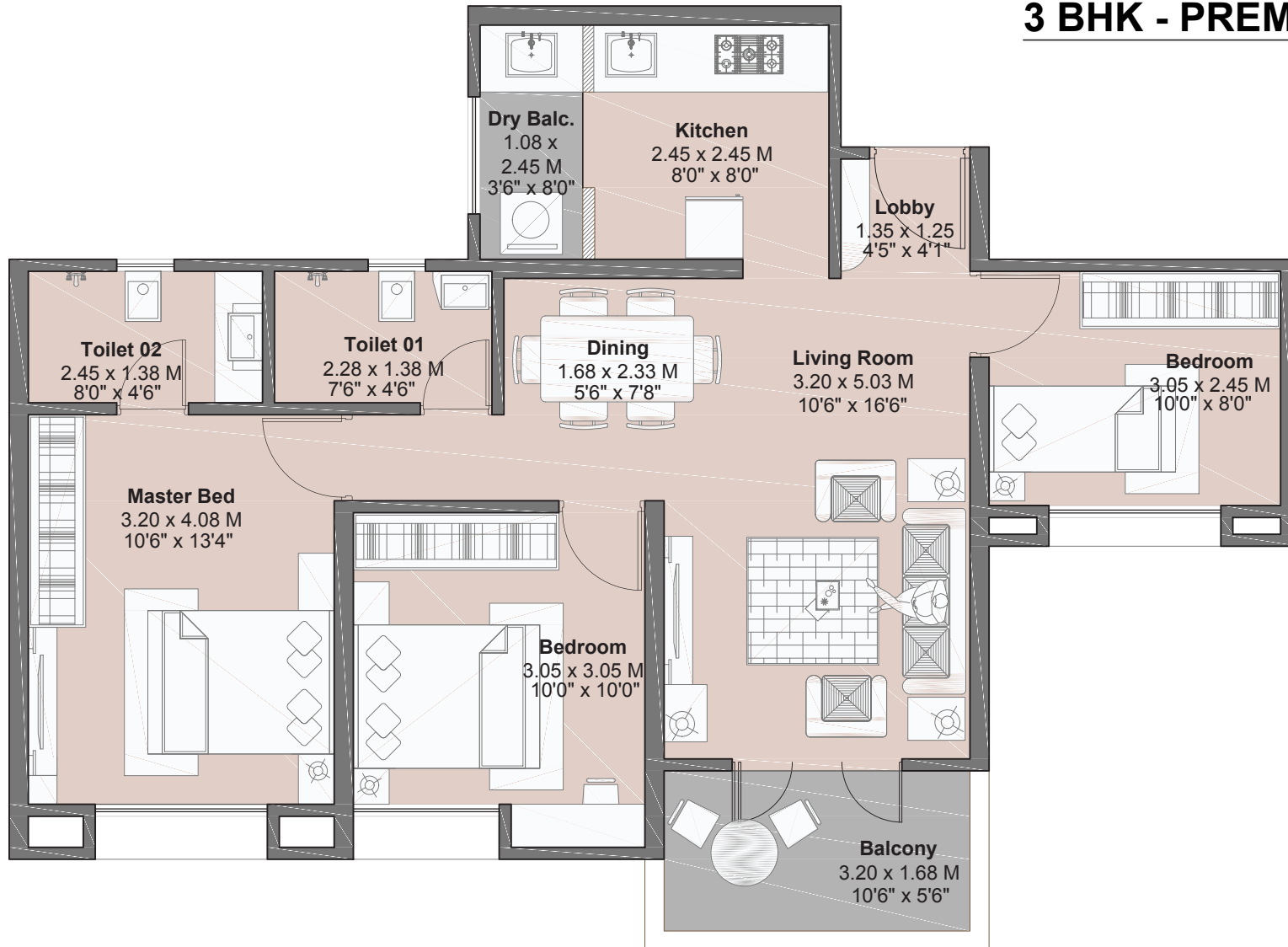
Type	Carpet Area		Balcony Area		Dry Balcony Area		Total Carpet Area	
	Sqm	Sqft	Sqm	Sqft	Sqm	Sqft	Sqm	Sqft
3 BHK-LUXURY B	83.60	899.87	5.61	60.39	2.63	28.31	91.84	989

3 BHK - PREMIUM A



Type	Carpet Area		Balcony Area		Dry Balcony Area		Total Carpet Area	
	Sqm	Sqft	Sqm	Sqft	Sqm	Sqft	Sqm	Sqft
3 BHK-PREMIUM A	71.18	766.18	5.36	57.70	2.63	28.31	79.17	852

3 BHK - PREMIUM B



Type	Carpet Area		Balcony Area		Dry Balcony Area		Total Carpet Area	
	Sqm	Sqft	Sqm	Sqft	Sqm	Sqft	Sqm	Sqft
3 BHK- PREMIUM B	71.10	765.32	5.36	57.70	2.63	28.31	79.09	851