

Plans



Partnering Goel Ganga Developments(Annuj Goel)



Artistic representation of the elegant tower facade

South Pune's Finest Landmark

India's No. 1 developer^ now presents new towers at Lodha Bella Vita: a relaxed Mediterranean inspired neighbourhood designed with only one goal: joie-de-vivre – enabling your family and you to have the most joyous and enjoyable living. With stunning views of our own orchard and Anandvan, each home is a work of art.

Master Plan



Tower 1

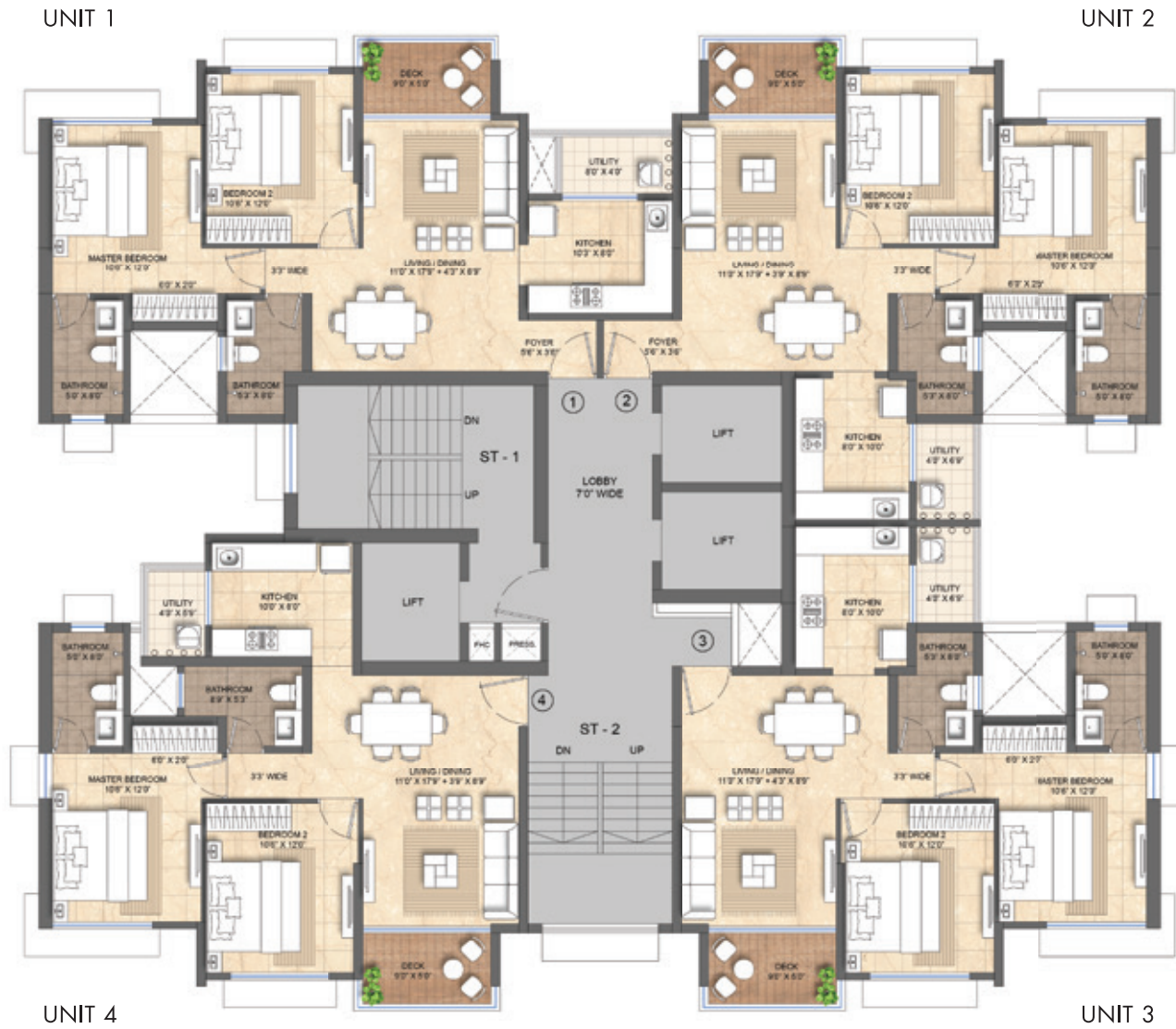


UNIT 1	3 BED WITH STUDY
UNIT 2	3 BED WITH STUDY
UNIT 3	3 BED
UNIT 4	3 BED

TYPICAL FLOOR PLAN



Tower 2 & 3



UNIT 1	2 BED
UNIT 2	2 BED
UNIT 3	2 BED
UNIT 4	2 BED

TYPICAL FLOOR PLAN



Tower 4



UNIT 1	3 BED
UNIT 2	3 BED
UNIT 3	3 BED WITH STUDY
UNIT 4	3 BED WITH STUDY

TYPICAL FLOOR PLAN

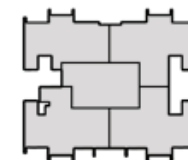


Tower 5



UNIT 1	2 BED
UNIT 2	2 BED
UNIT 3	2 BED
UNIT 4	2 BED

TYPICAL FLOOR PLAN

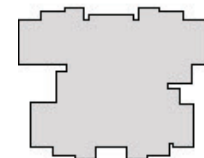


Tower 6



UNIT 1	3 BED
UNIT 2	3 BED
UNIT 3	2 BED
UNIT 4	2 BED

TYPICAL FLOOR PLAN



Tower 10



UNIT 1	3 BED WITH STUDY
UNIT 2	3 BED WITH STUDY
UNIT 3	3 BED
UNIT 4	3 BED

TYPICAL FLOOR PLAN



Tower 11



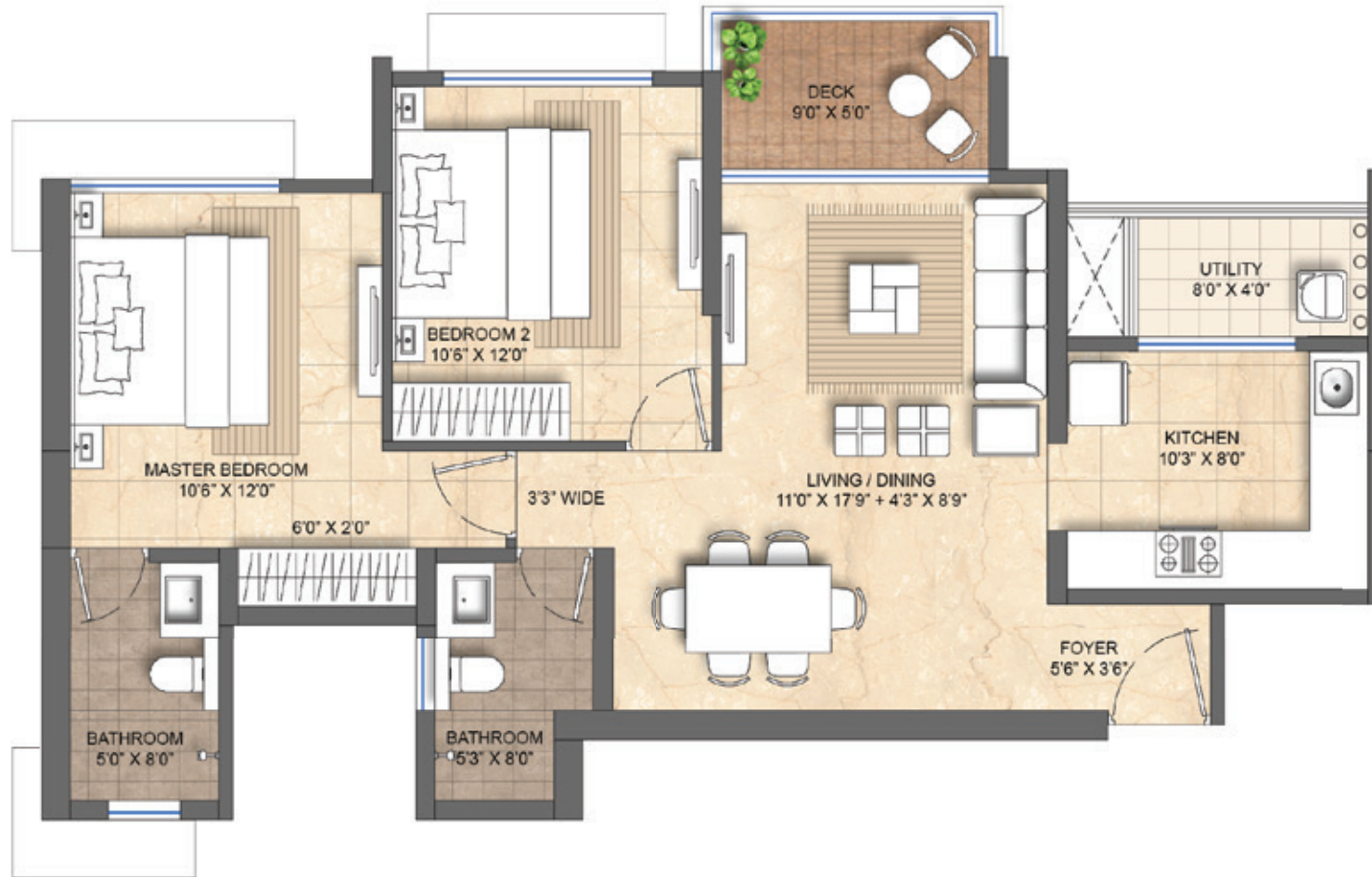
UNIT 1	5 BED
UNIT 2	5 BED

TYPICAL FLOOR PLAN



Tower 2 & 3

Area: 814 sq.ft



2 BED (UNIT-1)





2 BED (UNIT-2)



Tower 2 & 3

Area: 793 sq.ft

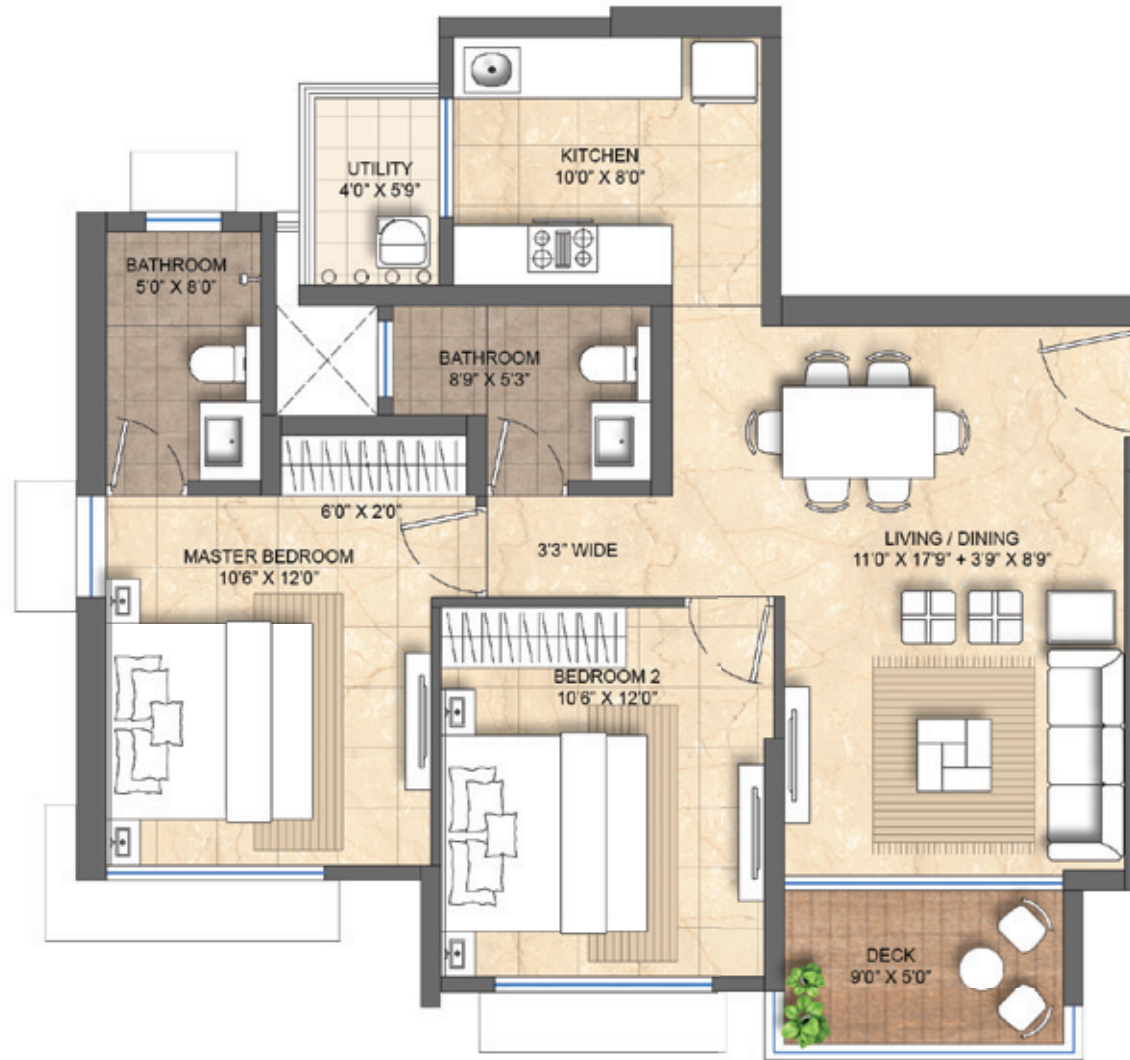


2 BED (UNIT -3)



Tower 2 & 3

Area: 798 sq.ft



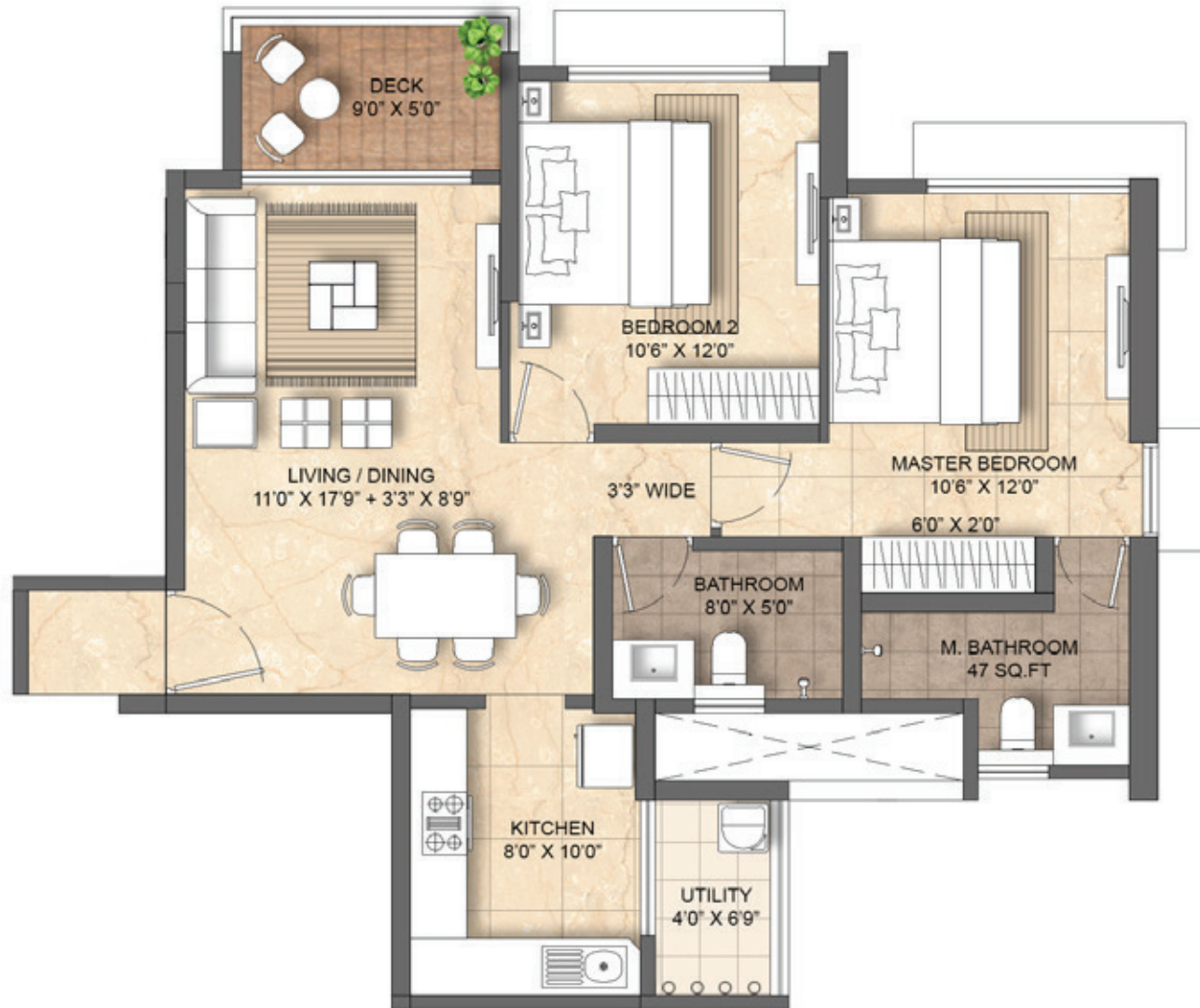
2 BED (UNIT -4)





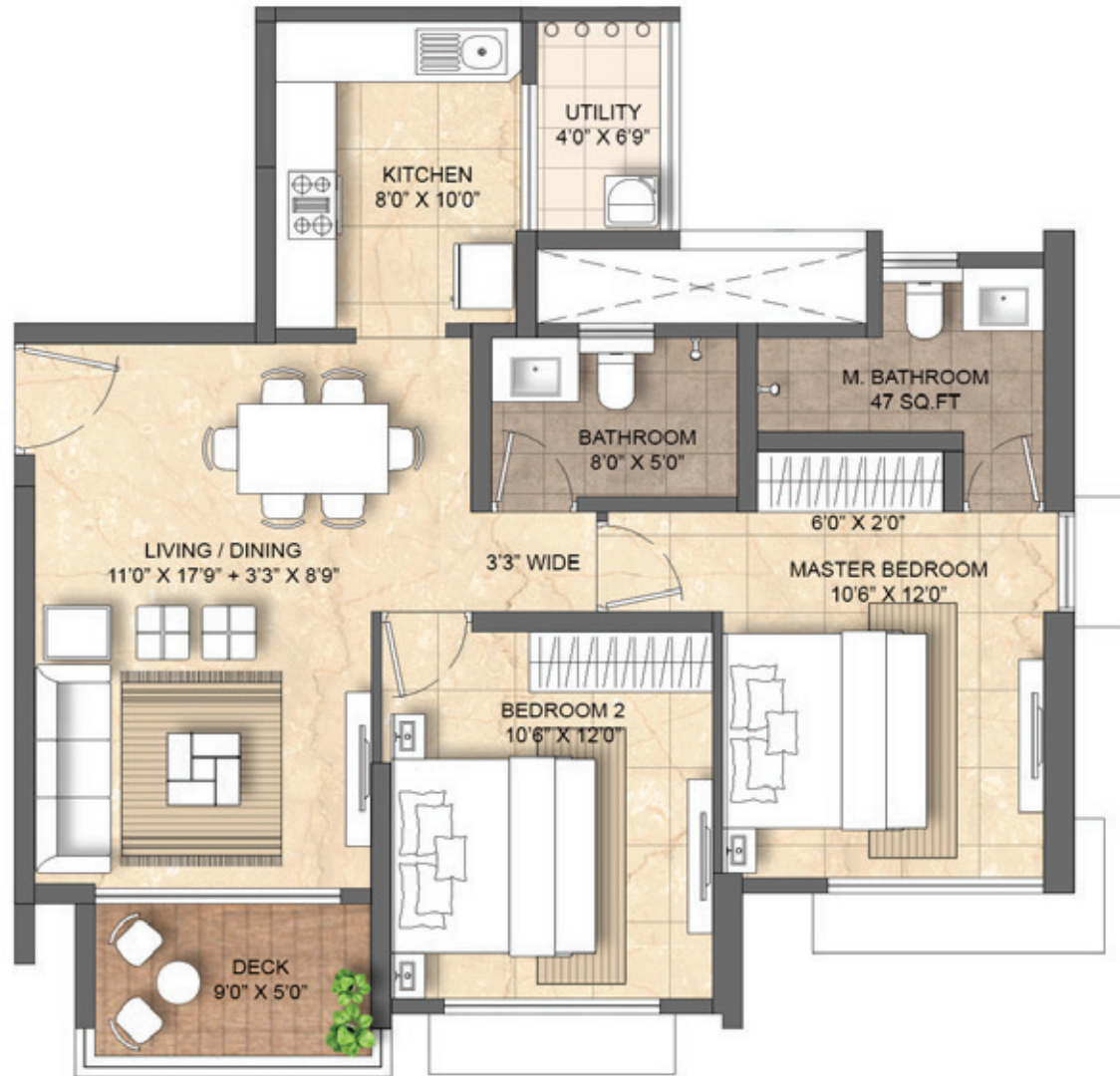
2 BED (UNIT-1)





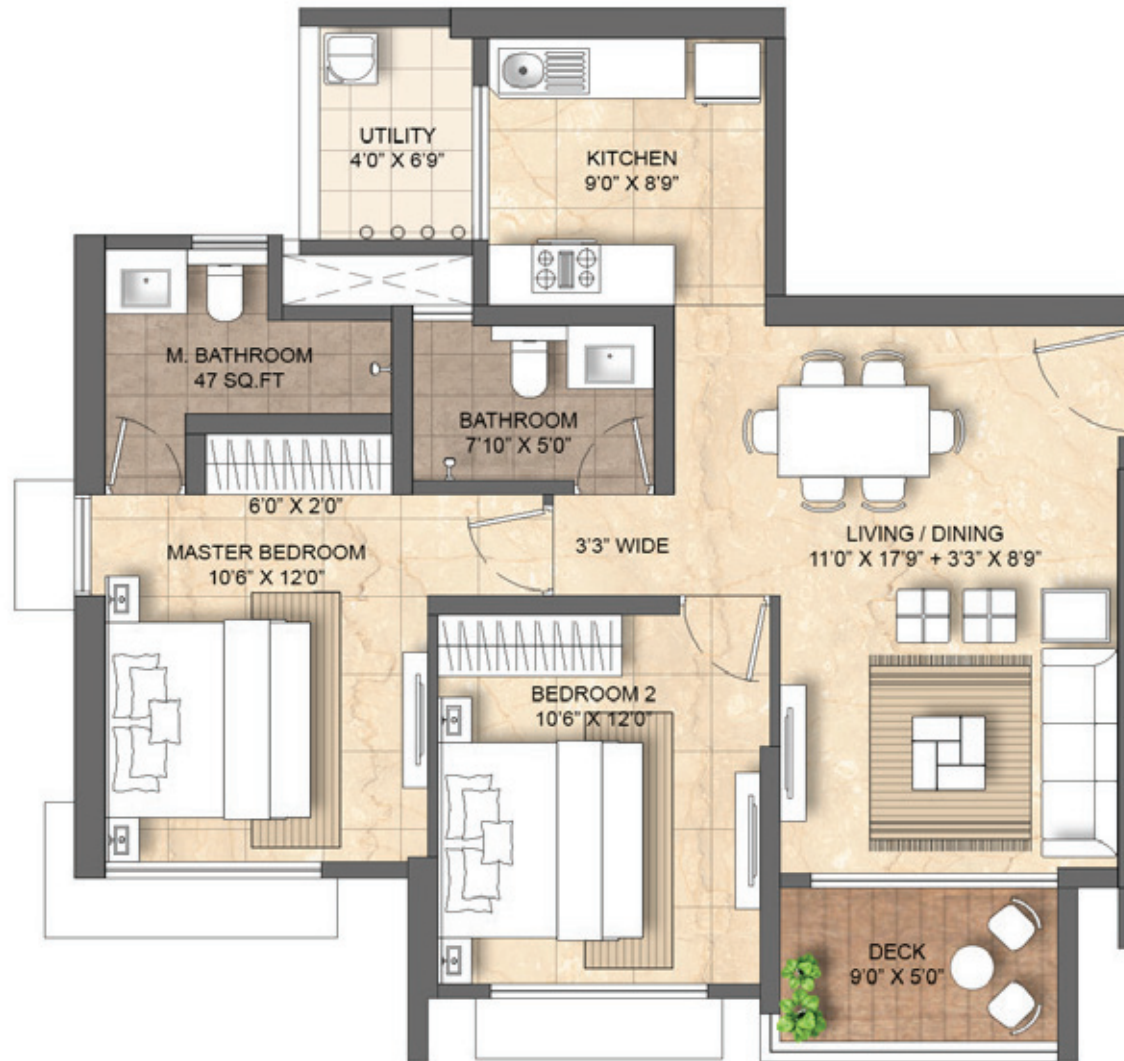
2 BED (UNIT-2)





2 BED (UNIT-3)



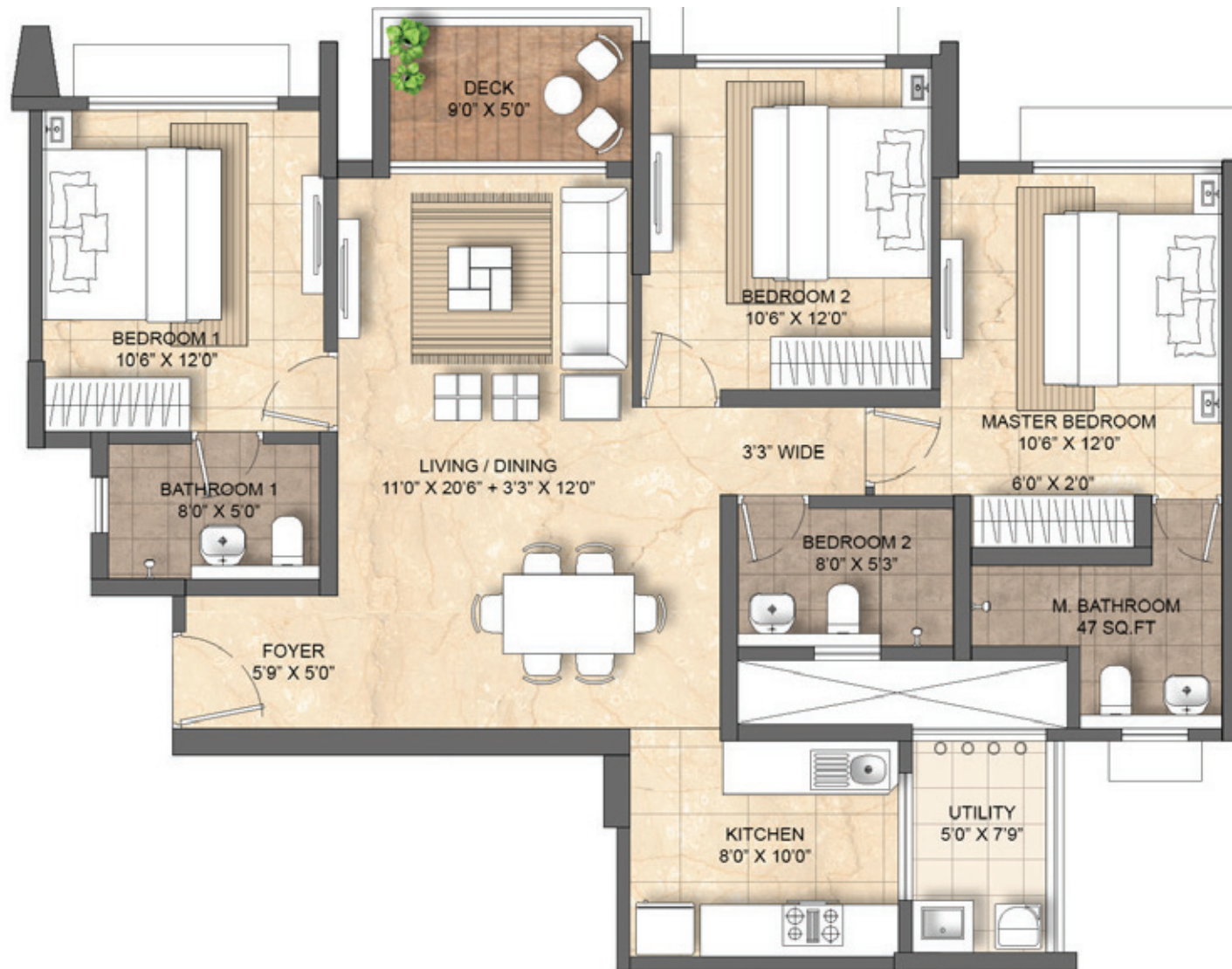


2 BED (UNIT -4)



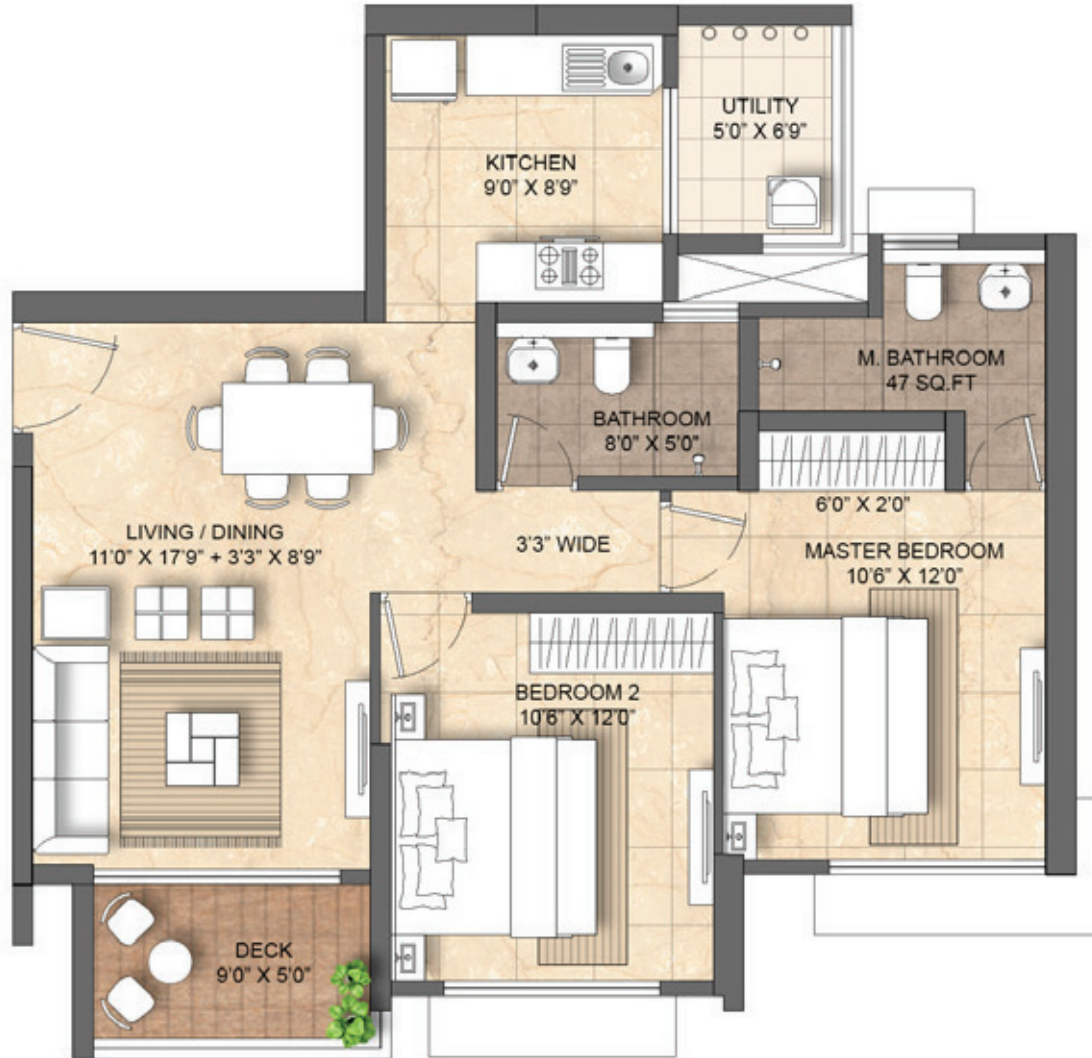


3 BED (UNIT-1)

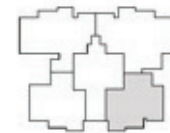


3 BED (UNIT-2)



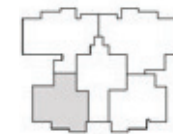


2 BED (UNIT -3)





2 BED (UNIT -4)



TOWER 1 & 10 - UNIT 3

Area: 1056 sq.ft



3 BED



TOWER 1 & 10 - UNIT 1

Area: 1196 sq.ft



3 BED WITH STUDY



TOWER 5 - UNIT 1 & 2

Area: 1659 sq.ft



4 BED JODI UNIT





5 BED (UNIT - 1 & 2)

